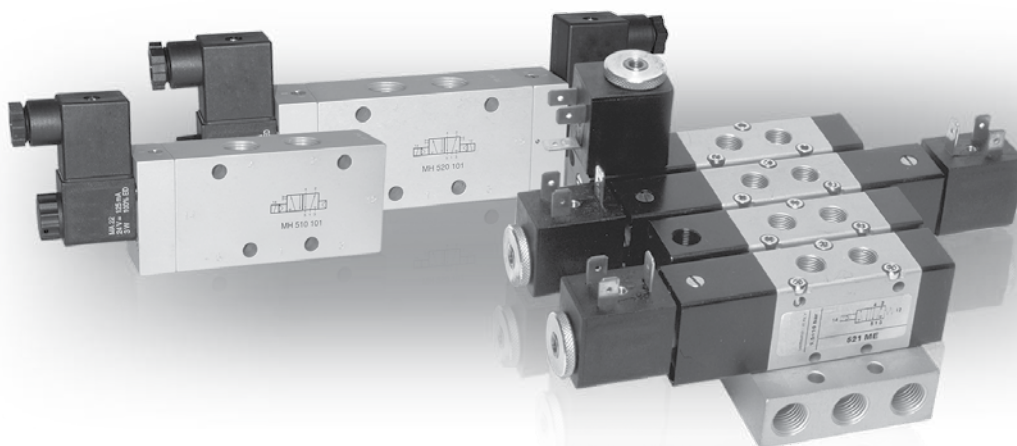


GAMME STANDARD

Électrodistributeurs

Solenoid actuated valves



INFORMATIONS GÉNÉRALES GENERAL INFORMATION

- Électrodistributeurs 3/2 - 5/2 - 5/3 avec raccord G1/8" - G1/4" - G3/8" - G1/2"
3/2 - 5/2 - 5/3 spool valves with G1/8" - G1/4" G3/8" - G1/2" threaded ports
- Montage en ligne sur embases monobloc ou associables (Voir embases p.136 à 141)
Installation in-line, on gang or modular manifolds
- Commande électrique à action manuelle bistable
Solenoid pilots with detented manual override as standard
- Version basse puissance 1.5W sur demande
On request with low consumption 1.5W
- Versions spéciales sur demande
Special versions on request

Temps de réponse - Response times

	G1/8"	G1/4"	G1/2"
Monostable <i>Monostable</i>	TRA (14) : 15 ms TRR (12) : 35 ms	TRA (14) : 19 ms TRR (12) : 45 ms	TRA (14) : 13 ms TRR (12) : 26 ms
Bistable <i>Bistable</i>	TRA (14) : 20ms TRR (12) : 20ms	TRA (14) : 22 ms TRR (12) : 22ms	TRA (14) : 24ms TRR (12) : 24ms

Matériaux

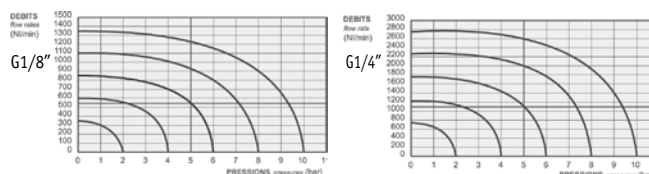
Corps : Aluminium anodisé
Ressorts : Inox
Joint : NBR
Tiroir : Aluminium nickelé
Parties internes : Laiton OT58

Materials

Body : Aluminium 11S
Springs : Stainless steel
Seals : NBR
Spool : Nickel plated aluminium
Internal parts : Brass OT58

Débit nominal à 6 bar

G1/8" : 550 NL/min G1/4" : 1100 NL/min
G3/8" : 2250 NL/min G1/2" : 4600 NL/min



Les produits suivants sont vendus sans bobine ; elles sont vendues séparément (voir chapitre 5).

The following listed products are sold without coils, which are bought separately (refer to chapter 5).

Diamètre nominal <i>Nominal orifice</i>	G1/8" : 5 mm - G 1/4" : 7.5 mm G3/8" : 10mm - G1/2" : 13mm		
Echelle de température <i>Temperature range</i>	max +60°C		
Pression de travail <i>Working pressure</i>	al. interne monost. <i>[monost. internal air supply]</i>	al. interne bist. <i>[bistable internal air supply]</i>	alim. séparée <i>[separate air supply]</i>
	2.5 ... 10 bar 0.25 ... 1 MPa	1 ... 10 bar 0.1 ... 1 MPa	max 10 bar max 1 MPa
Pression exercée (avec alimentation séparée) <i>Actuating pressure (for separate air supply)</i>	monostable <i>[monostable]</i>		bistable <i>[bistable]</i>
	2.5 ... 10 bar 0.25 ... 1 MPa		1 ... 10 bar 0.1 ... 1 MPa
Fluide <i>Fluid</i>	air filtré 50µ avec ou sans lubrification 50µ filtered lubricated or non lubricated air		

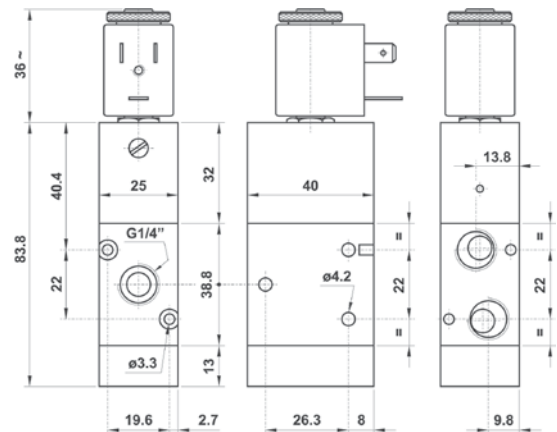
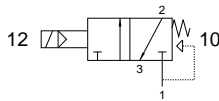
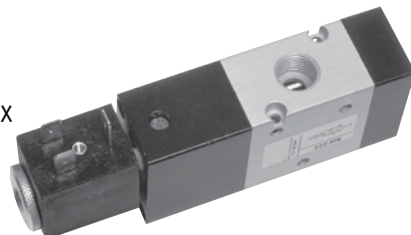
GAMME STANDARD

Électro distributeurs G1/4" | Solenoid actuated valves

322 ME

Électro distributeur 3/2 NF monostable
rappel à combinaison de ressort
raccordement G1/4"
3/2 NC solenoid pilot
spring return
G1/4"

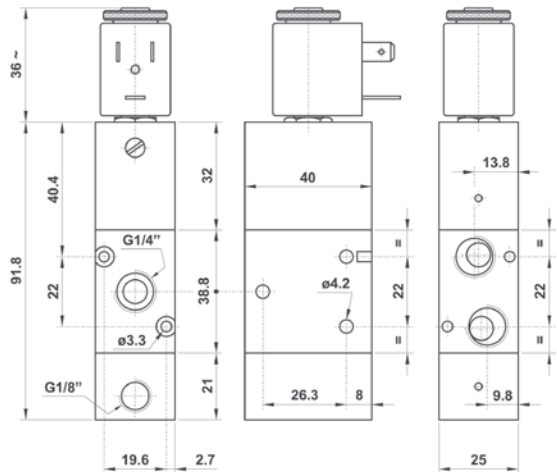
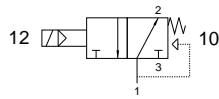
Version Atex 2GD T6 : 322ME.ATEX



322 MEA

Électro distributeur 3/2 NO monostable
rappel à combinaison de ressort
raccordement G1/4"
3/2 NO solenoid pilot
spring return
G1/4"

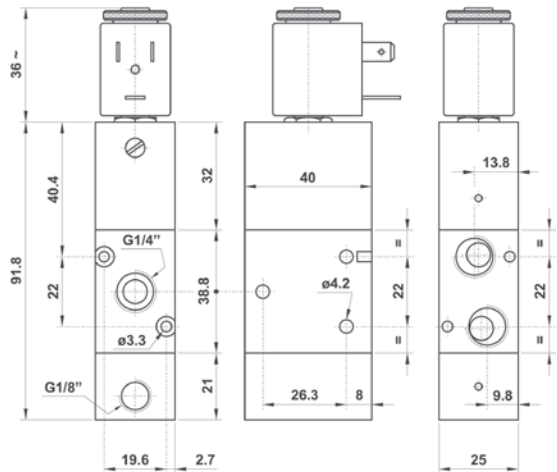
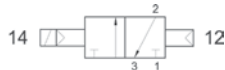
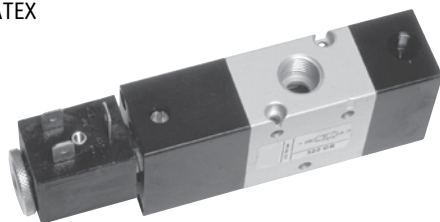
Version Atex 2GD T6 : 322MEA.ATEX



322 CE

Électro distributeur 3/2 bistable
commande électrique
retour par commande pneumatique
raccordement G1/4"
3/2 solenoid pilot
separate pneumatically piloted return
G1/4"

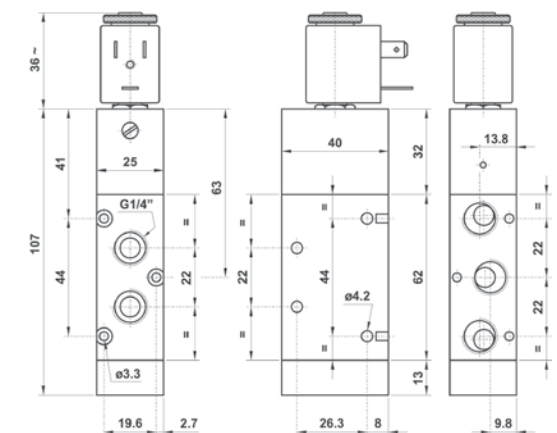
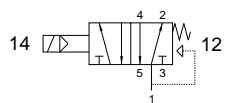
Version Atex 2GD T6 : 322CE.ATEX



522 ME

Électro distributeur 5/2 monostable
rappel à combinaison de ressort
raccordement G1/4"
5/2 solenoid pilot
spring return
G1/4"

Version Atex 2GD T6 : 522ME.ATEX



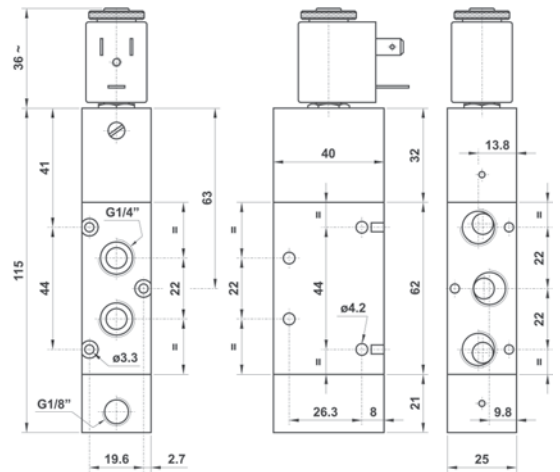
GAMME STANDARD

Électro distributeurs G1/4" | Solenoid actuated valves

522 CE

Électro distributeur 5/2 bistable
commande électrique
retour par commande pneumatique
raccordement G1/4"
*5/2 solenoid pilot
separate pneumatically piloted return
G1/4"*

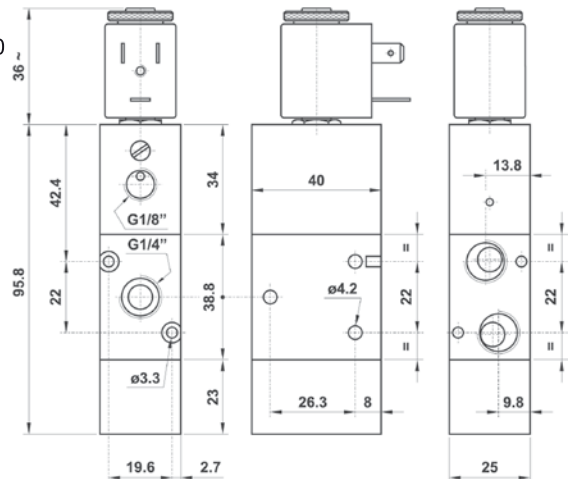
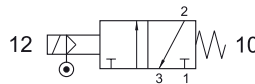
Version Atex 2GD T6 : 522CE.ATEX



322 ME AS

Électro distributeur 3/2 NF monostable
à assistance pneumatique externe
rappel ressort mécanique
raccordement G1/4"
*3/2 NO solenoid pilot with separate air supply
spring return
G1/4"*

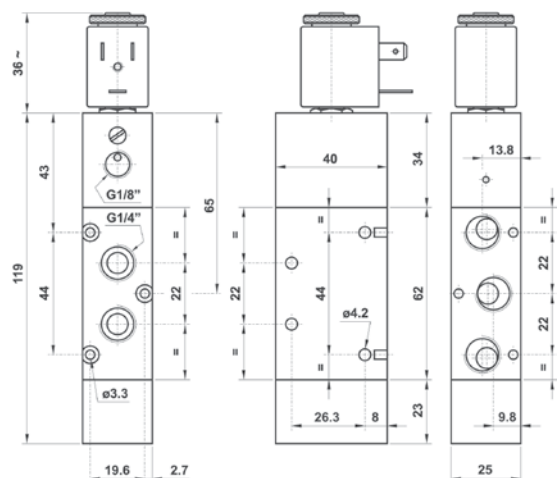
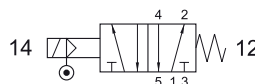
Version Atex 2GD T6 : 322MEAS.ATEX



522 ME AS

Électro distributeur 5/2 monostable
assistance pneumatique externe
rappel ressort mécanique
raccordement G1/4"
*5/2 solenoid pilot with separate air supply
spring return
G1/4"*

Version Atex 2GD T6 : 522MEAS.ATEX



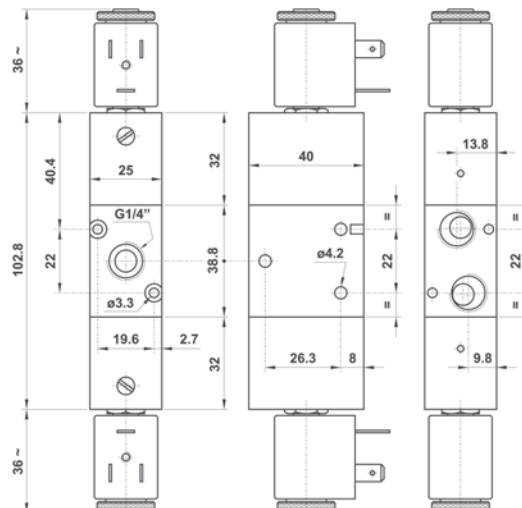
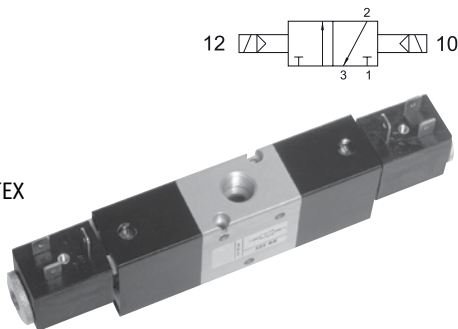
GAMME STANDARD

Électro distributeurs G1/4" | Solenoid actuated valves

322 EE

Électro distributeur 3/2 bistable
raccordement G1/4"
3/2 double solenoid pilot
G1/4"

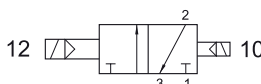
Version Atex 2GD T6 : 322EE.ATEX



322 EED

Électro distributeur 3/2 bistable différentiel
raccordement G1/4"
3/2 double solenoid pilot
with differential
G1/4"

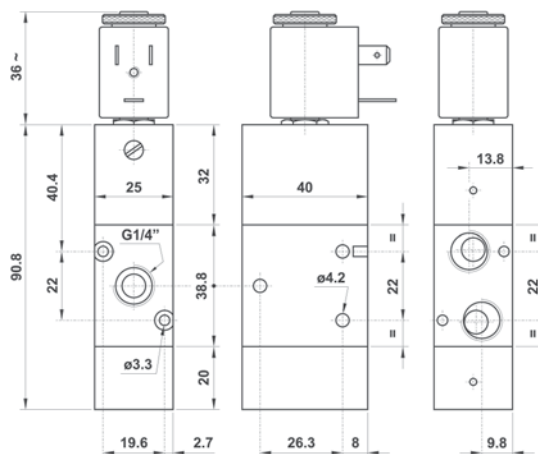
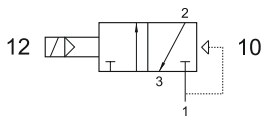
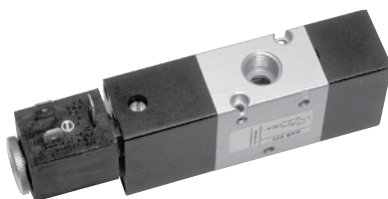
Version Atex 2GD T6 : 322EED.ATEX



322 EFP

Électro distributeur 3/2 NF monostable
rappel ressort pneumatique
raccordement G1/4"
3/2 NC solenoid pilot pneumatic
spring return
G1/4"

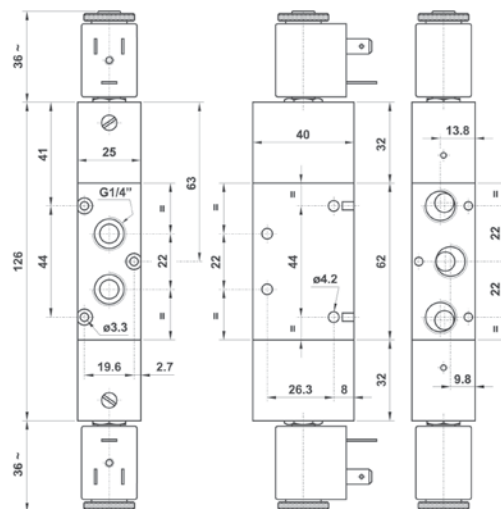
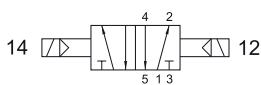
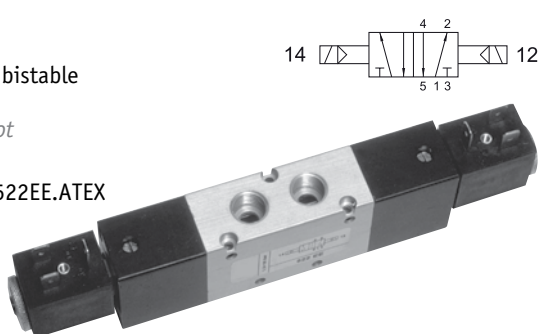
Version Atex 2GD T6 : 322EFP.ATEX



522 EE

Électro distributeur 5/2 bistable
raccordement G1/4"
5/2 double solenoid pilot
G1/4"

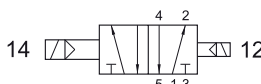
Version Atex 2GD T6 : 522EE.ATEX



522 EED

Électro distributeur 5/2 bistable différentiel
raccordement G1/4"
5/2 double solenoid pilot
with differential
G1/4"

Version Atex 2GD T6 : 522EED.ATEX



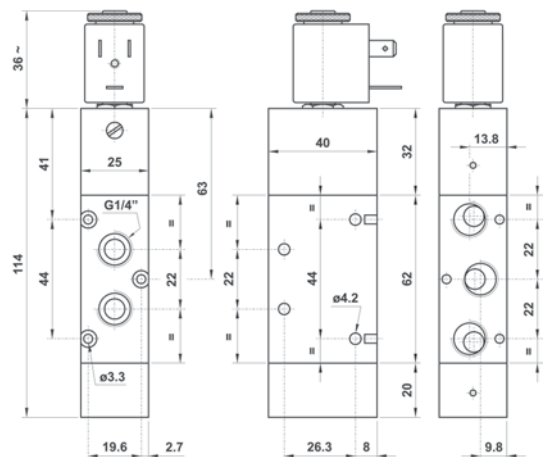
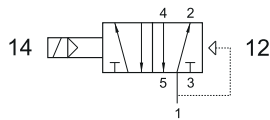
GAMME STANDARD

Électrodistribeurs G1/4" | Solenoid actuated valves

522 EFP

Électrodistribeur 5/2 monostable
rappel ressort pneumatique
raccordement G1/4"
5/2 solenoid pilot
pneumatic spring return
G1/4"

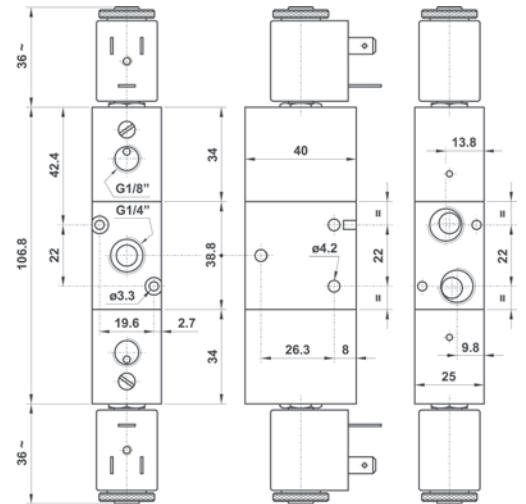
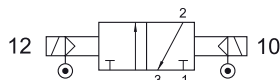
Version Atex 2GD T6 : 522EFP.ATEX



322 EE AS

Électrodistribeur 3/2 bistable
assistance pneumatique externe
raccordement G1/4"
3/2 double solenoid pilot
with separate air supply
G1/4"

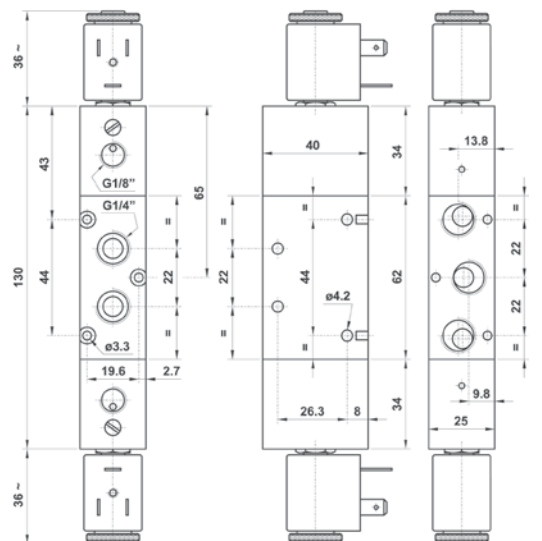
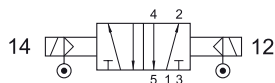
Version Atex 2GD T6 : 322EEAS.ATEX



522 EE AS

Électrodistribeur 5/2 bistable
assistance pneumatique externe
raccordement G1/4"
5/2 double solenoid pilot
with separate air supply
G1/4"

Version Atex 2GD T6 : 522EEAS.ATEX

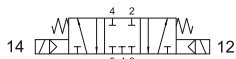


GAMME STANDARD

Électro distributeurs G1/4" | Solenoid actuated valves

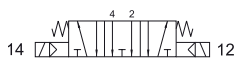
5223C EE

Centre fermé
Closed center



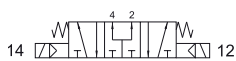
5223A EE

Centre ouvert
Open center



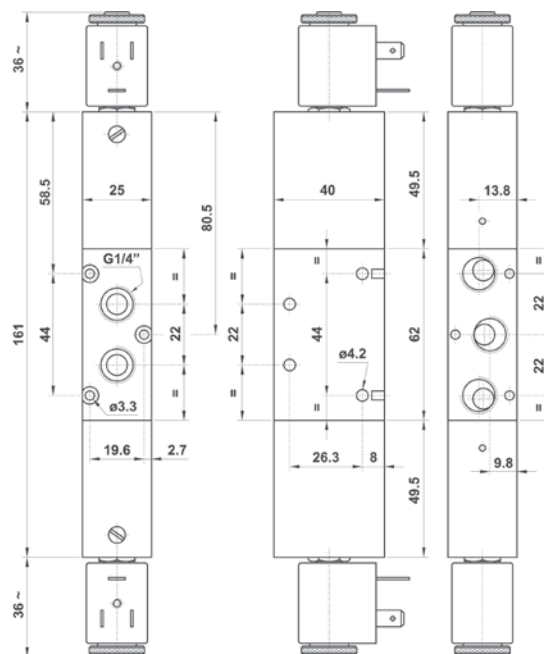
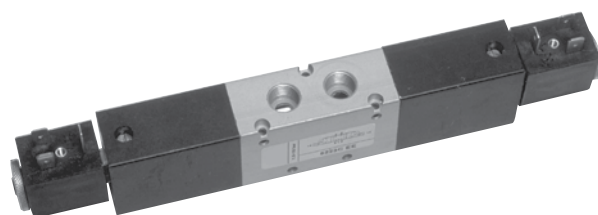
5223P EE

Centre en pression
Pressurized center



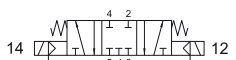
Électro distributeur 5/3
bistable
raccordement G1/4"
5/3 double solenoid pilot
G1/4"

Version Atex 2GD T6 : 5223*EE.ATEX



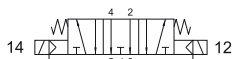
5223C EE AS

Centre fermé
Closed center



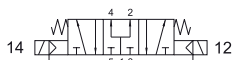
5223A EE AS

Centre ouvert
Open center



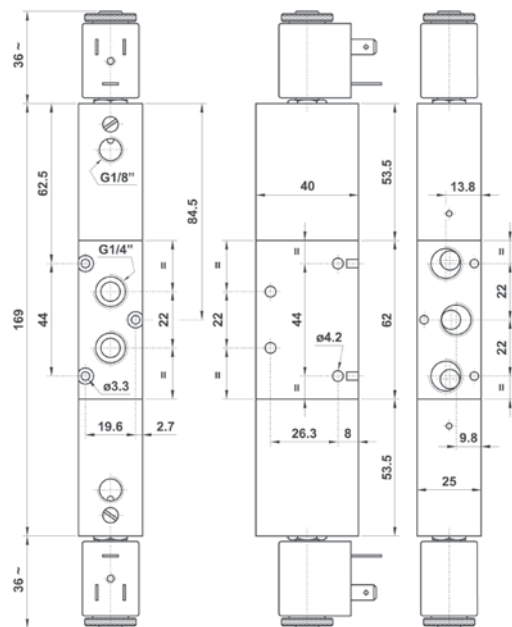
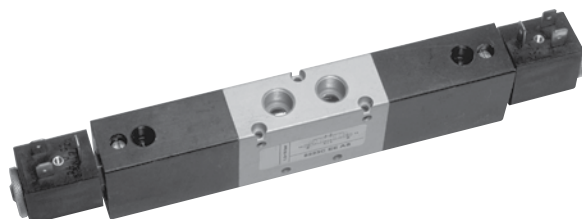
5223P EE AS

Centre en pression
Pressurized center



Électro distributeur 5/3
bistable
assistance pneumatique externe
raccordement G1/4"
5/3 double solenoid pilot
with separate air supply
G1/4"

Version Atex 2GD T6 : 5223*EEAS.ATEX



GAMME STANDARD

Électrodistribeurs G1/4" - pilote 15 mm |

Solenoid actuated valves

322 ME MIC xx

Électrodistribeur 3/2 NF

commande électrique 15 mm (voir chapitre 5)

rappel à combinaison de ressort

raccordement G1/4"

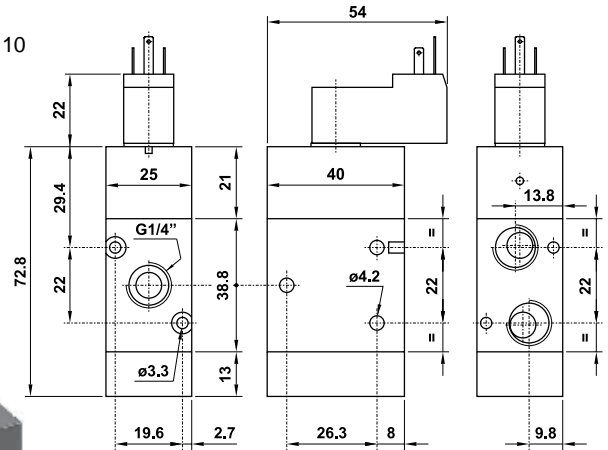
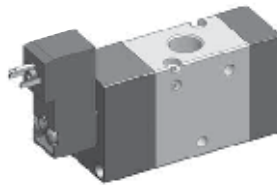
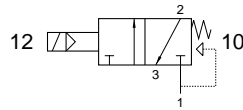
3/2 NC with 15 mm solenoid pilot (see chapter 5) - G1/4"

Version Atex 1/2GD T4 : 322MEMICx.ATEX

Afin d'obtenir la référence de votre produit, remplacez la lettre "xx" par l'indication de la tension selon les codes ci-dessous.

In the part number replace the letters "xx" with the reference of the solenoid tension

24V DC.....01 24V 50/60Hz.....02



322 EE MIC xx

Électrodistribeur 3/2 bistable

commande électrique 15 mm (voir chapitre 5)

raccordement G1/4"

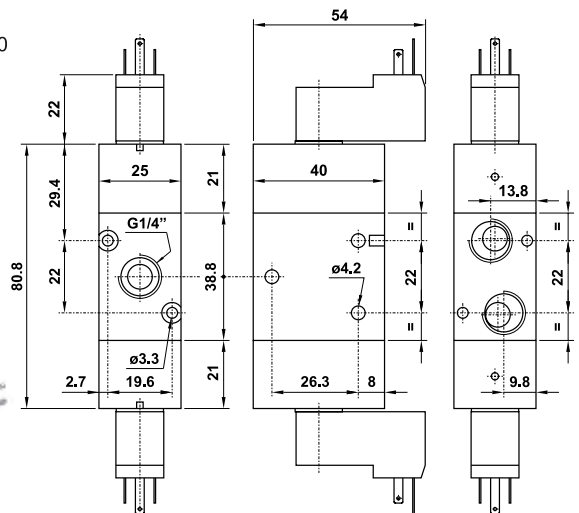
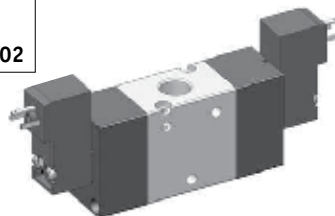
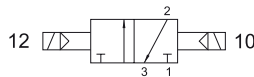
3/2 with double 15 mm solenoid pilot (see chapter 5) G1/4"

Version Atex 1/2GD T4 : 322EEMICx.ATEX

Afin d'obtenir la référence de votre produit, remplacez la lettre "xx" par l'indication de la tension selon les codes ci-dessous.

In the part number replace the letters "xx" with the reference of the solenoid tension

24V DC.....01 24V 50/60Hz.....02



522 ME MIC xx

Électrodistribeur 5/2 monostable

commande électrique 15 mm (voir chapitre 5)

rappel à combinaison de ressort

raccordement G1/4"

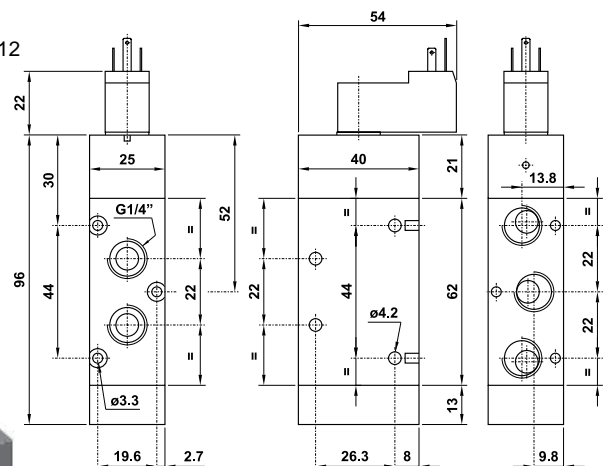
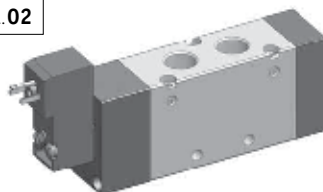
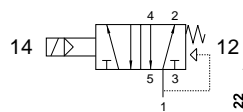
3/2 with double 15 mm solenoid pilot (see chapter 5) - G1/4"

Version Atex 1/2GD T4 : 522MEMICx.ATEX

Afin d'obtenir la référence de votre produit, remplacez la lettre "xx" par l'indication de la tension selon les codes ci-dessous.

In the part number replace the letters "xx" with the reference of the solenoid tension

24V DC.....01 24V 50/60Hz.....02



GAMME STANDARD

Électrodistribeurs G1/4" - pilote 15 mm |

Solenoid actuated valves

522 EE MIC xx

Électrodistribeur 5/2 bistable

commande électrique 15 mm (voir chapitre 5)

raccordement G1/4"

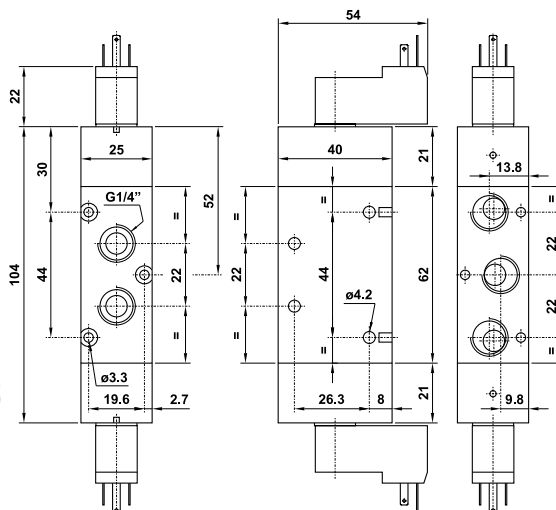
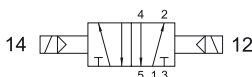
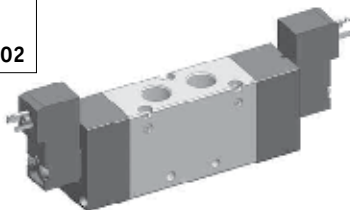
5/2 with double 15 mm solenoid pilot (see chapter 5)
G1/4"

Version Atex 1/2GD T4 : 522EEMICx.ATEX

Afin d'obtenir la référence de votre produit, remplacez la lettre "xx" par l'indication de la tension selon les codes ci-dessous.

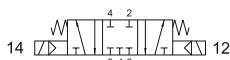
In the part number replace the letters "xx" with the reference of the solenoid tension

24V DC.....01 24V 50/60Hz.....02



5223C EE MIC xx

Centre fermé
Closed center



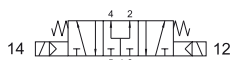
5223A EE MIC xx

Centre ouvert
Open center



5223P EE MIC xx

Centre en pression
Pressurized center



Électrodistribeur 5/3

commande électrique 15 mm (voir chapitre 5)

raccordement G1/4"

5/3 with double 15 mm solenoid pilot (see chapter 5)
G1/4"

Version Atex 1/2GD T4 : 5223*EEMICx.ATEX

Afin d'obtenir la référence de votre produit, remplacez la lettre "xx" par l'indication de la tension selon les codes ci-dessous.

In the part number replace the letters "xx" with the reference of the solenoid tension

24V DC.....01 24V 50/60Hz.....02

