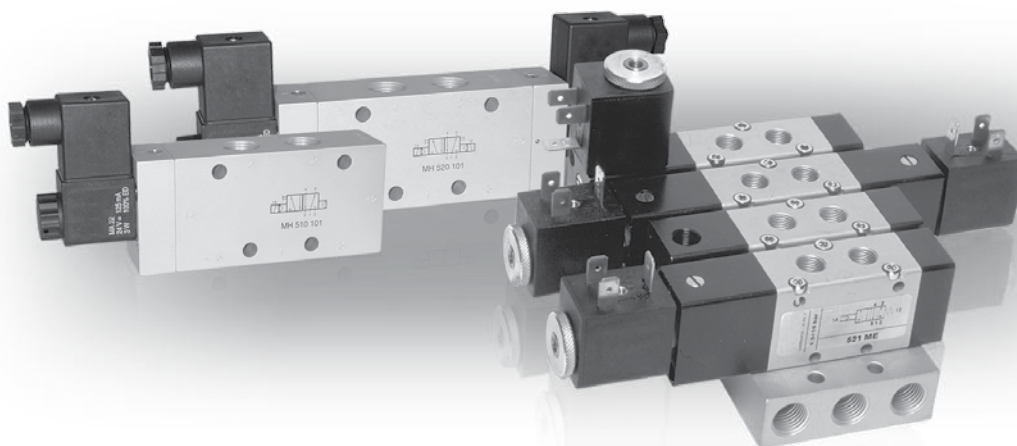


GAMME STANDARD

Électrodistributeurs

Solenoid actuated valves



INFORMATIONS GÉNÉRALES GENERAL INFORMATION

- Électrodistributeurs 3/2 - 5/2 - 5/3 avec raccord G1/8" - G1/4" - G3/8" - G1/2"
 3/2 - 5/2 - 5/3 spool valves with G1/8" - G1/4" G3/8" - G1/2" threaded ports
- Montage en ligne sur embases monobloc ou associables (Voir embases p.136 à 141)
 Installation in-line, on gang or modular manifolds
- Commande électrique à action manuelle bistable
 Solenoid pilots with detented manual override as standard
- Version basse puissance 1.5W sur demande
 On request with low consumption 1.5W
- Versions spéciales sur demande
 Special versions on request

Temps de réponse - Response times

	G1/8"	G1/4"	G1/2"
Monostable <i>Monostable</i>	TRA (14) : 15 ms TRR (12) : 35 ms	TRA (14) : 19 ms TRR (12) : 45 ms	TRA (14) : 13 ms TRR (12) : 26 ms
Bistable <i>Bistable</i>	TRA (14) : 20ms TRR (12) : 20ms	TRA (14) : 22 ms TRR (12) : 22ms	TRA (14) : 24ms TRR (12) : 24ms

Matériaux

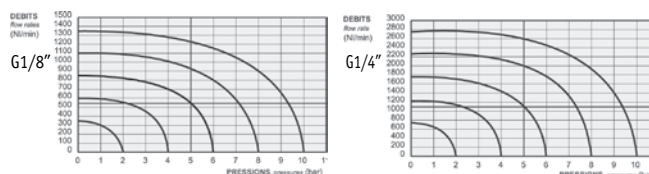
Corps : Aluminium anodisé
Ressorts : Inox
Joint : NBR
Tiroir : Aluminium nickelé
Parties internes : Laiton OT58

Materials

Body : Aluminium 11S
Springs : Stainless steel
Seals : NBR
Spool : Nickel plated aluminium
Internal parts : Brass OT58

Débit nominal à 6 bar

G1/8" : 550 NL/min G1/4" : 1100 NL/min
G3/8" : 2250 NL/min G1/2" : 4600 NL/min



Les produits suivants sont vendus sans bobine ; elles sont vendues séparément (voir chapitre 5).

The following listed products are sold without coils, which are bought separately (refer to chapter 5).

Diamètre nominal <i>Nominal orifice</i>	G1/8" : 5 mm - G 1/4" : 7.5 mm G3/8" : 10mm - G1/2" : 13mm		
Echelle de température <i>Temperature range</i>	max +60°C		
Pression de travail <i>Working pressure</i>	al. interne monost. <i>[monost. internal air supply]</i>	al. interne bist. <i>[bistable internal air supply]</i>	alim. séparée <i>[separate air supply]</i>
	2.5 ... 10 bar 0.25 ... 1 MPa	1 ... 10 bar 0.1 ... 1 MPa	max 10 bar max 1 MPa
Pression exercée (avec alimentation séparée) <i>Actuating pressure (for separate air supply)</i>	monostable <i>[monostable]</i>		bistable <i>[bistable]</i>
	2.5 ... 10 bar 0.25 ... 1 MPa		1 ... 10 bar 0.1 ... 1 MPa
Fluide <i>Fluid</i>	air filtré 50µ avec ou sans lubrification 50µ filtered lubricated or non lubricated air		

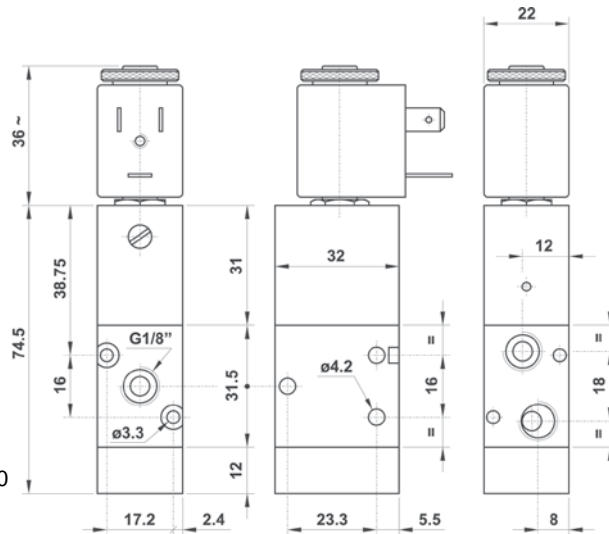
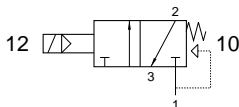
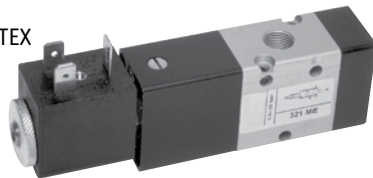
GAMME STANDARD

Électro distributeurs G1/8" | Solenoid actuated valves

321 ME

Électro distributeur 3/2 NF monostable
rappel ressort pneumatique
raccordement G1/8"
*3/2 NC solenoid pilot - spring return
G1/8"*

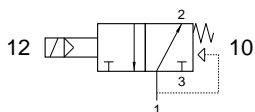
Version Atex 2GD T6 : 321ME.ATEX



321 MEA

Électro distributeur 3/2 NO monostable
rappel ressort pneumatique
raccordement G1/8"
*3/2 NO solenoid pilot - spring return
G1/8"*

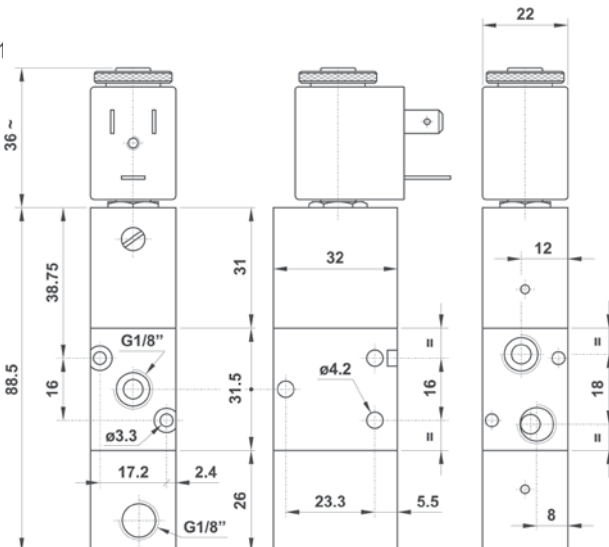
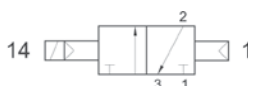
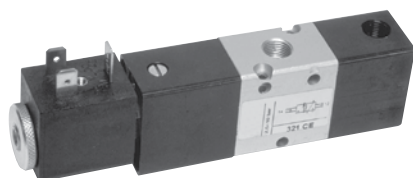
Version Atex 2GD T6 : 321MEA.ATEX



321 CE

Électro distributeur 3/2 bistable
commande électrique
retour par commande pneumatique
raccordement G1/8"
*3/2 solenoid pilot
separate pneumatically piloted return
G1/8"*

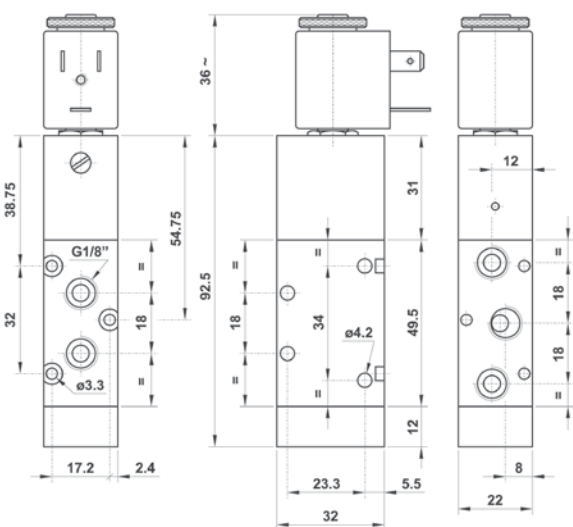
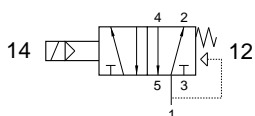
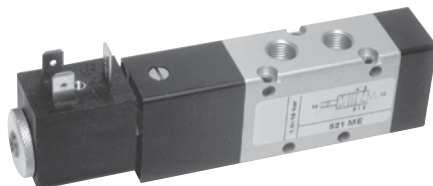
Version Atex 2GD T6 : 321CE.ATEX



521 ME

Électro distributeur 5/2 monostable
rappel ressort pneumatique
raccordement G1/8"
*5/2 solenoid pilot - spring return
G1/8"*

Version Atex 2GD T6 : 521ME.ATEX



GAMME STANDARD

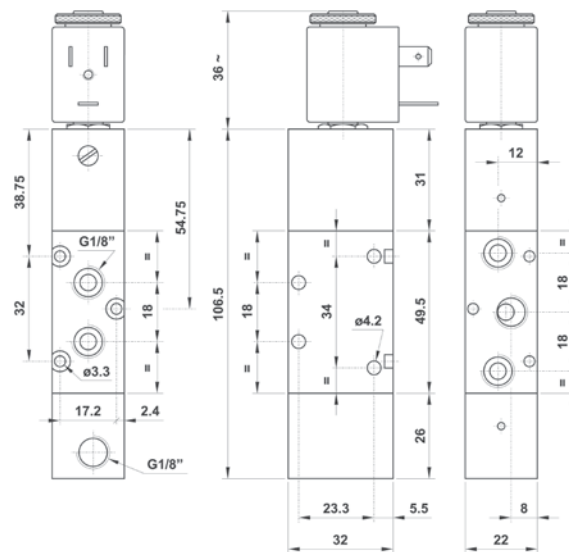
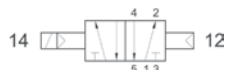
Électro distributeurs G1/8" |

Solenoid actuated valves

521 CE

Électro distributeur 5/2 bistable
commande électrique
retour par commande pneumatique
raccordement G1/8"
*5/2 solenoid pilot
separate pneumatically piloted return
G1/8"*

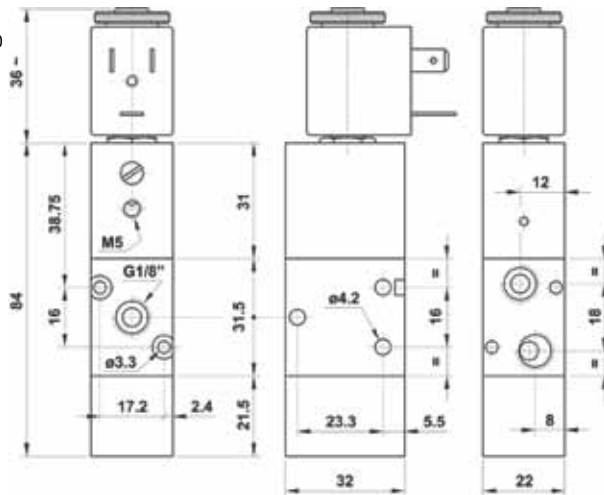
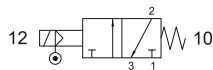
Version Atex 2GD T6 : 521CE.ATEX



321 ME AS

Électro distributeur 3/2 NF monostable
à assistance pneumatique externe
rappel ressort mécanique
raccordement G1/8"
*3/2 solenoid pilot with separate air supply
spring return
G1/8"*

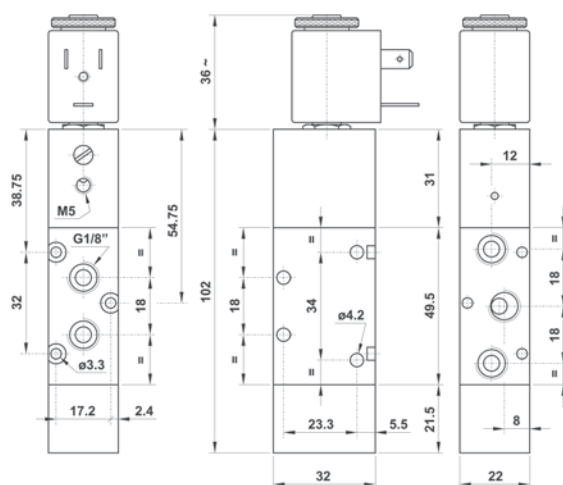
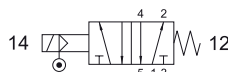
Version Atex 2GD T6 : 321MEAS.ATEX



521 ME AS

Électro distributeur 5/2 monostable
à assistance pneumatique externe
rappel ressort mécanique
raccordement G1/8"
*5/2 solenoid pilot with separate air supply
spring return
G1/8"*

Version Atex 2GD T6 : 521MEAS.ATEX



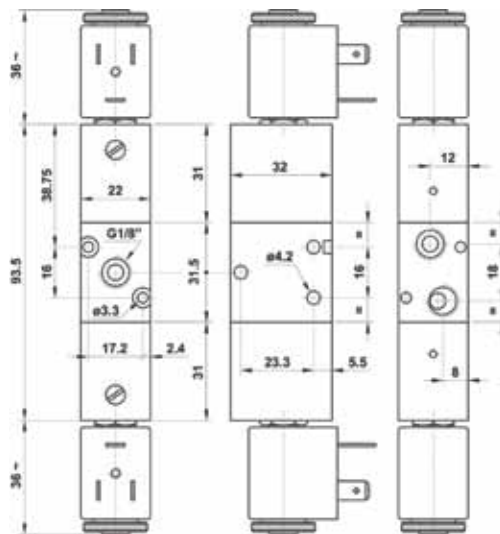
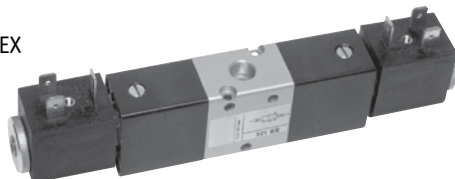
GAMME STANDARD

ÉlectrodistIBUTEURS G1/8" | Solenoid actuated valves

321 EE

ÉlectrodistIBUTEUR 3/2 bistable
raccordement G1/8"
3/2 double solenoid pilot
G1/8"

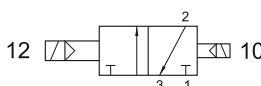
Version Atex 2GD T6 : 321EE.ATEX



321 EED

ÉlectrodistIBUTEUR 3/2 bistable différentiel
raccordement G1/8"
3/2 double solenoid pilot
with differential
G1/8"

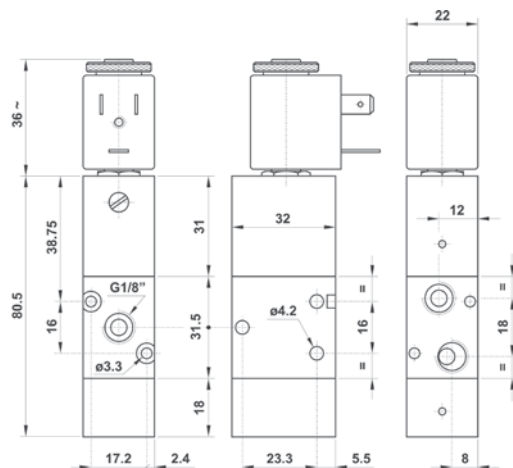
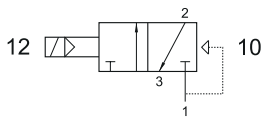
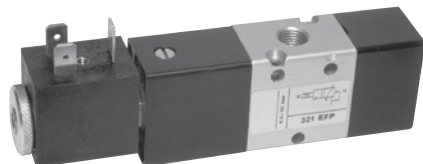
Version Atex 2GD T6 : 321EED.ATEX



321 EFP

ÉlectrodistIBUTEUR 3/2 NF monostable
rappel ressort pneumatique
raccordement G1/8"
3/2 NC solenoid pilot
pneumatic spring return
G1/8"

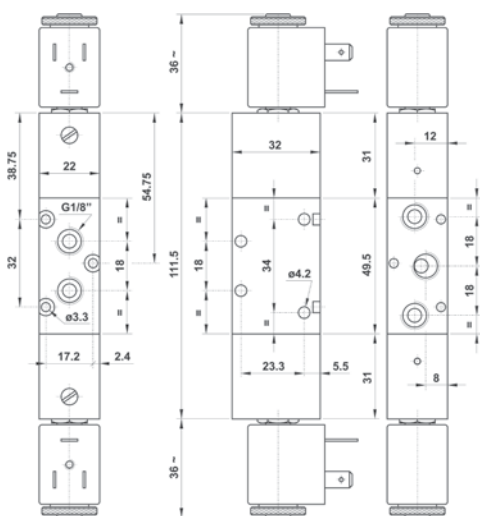
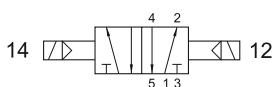
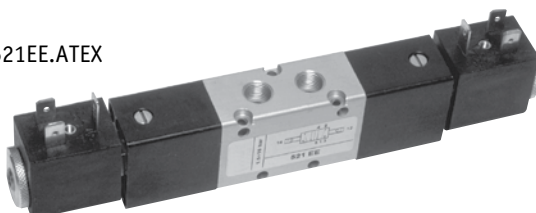
Version Atex 2GD T6 : 321EFP.ATEX



521 EE

ÉlectrodistIBUTEUR 5/2 bistable
raccordement G1/8"
5/2 double solenoid pilot
G1/8"

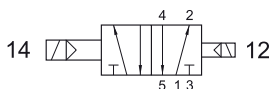
Version Atex 2GD T6 : 521EE.ATEX



521 EED

ÉlectrodistIBUTEUR 5/2 bistable différentiel
raccordement G1/8"
5/2 double solenoid pilot
with differential
G1/8"

Version Atex 2GD T6 : 521EED.ATEX



GAMME STANDARD

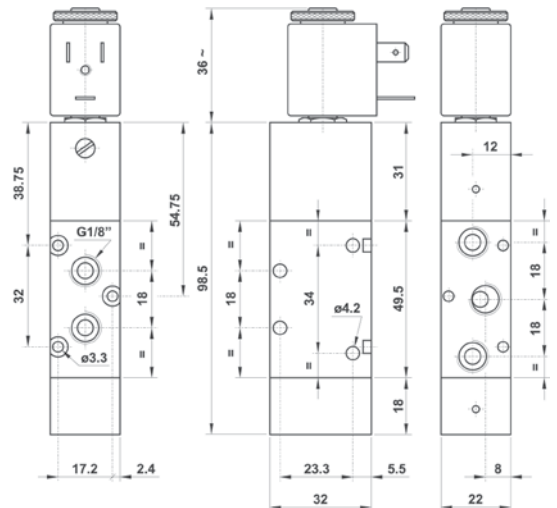
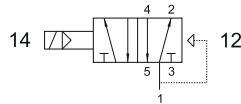
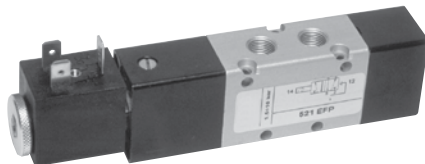
Électrodistribeurs G1/8" |

Solenoid actuated valves

521 EFP

Électrodistribeur 5/2 monostable
rappel ressort pneumatique
raccordement G1/8"
5/2 solenoid pilot
pneumatic spring return
G1/8"

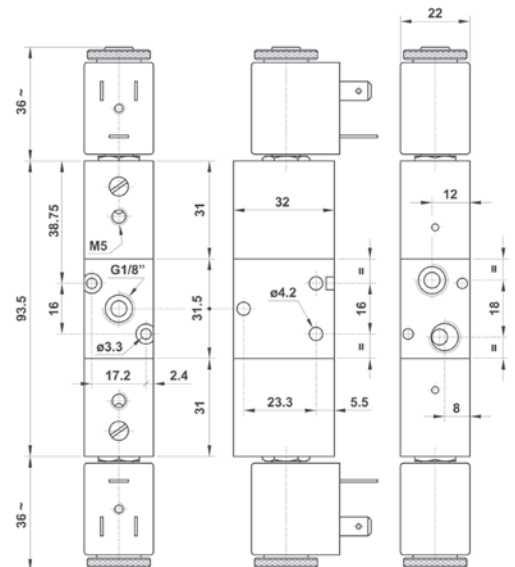
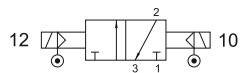
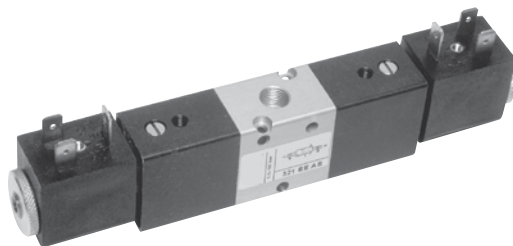
Version Atex 2GD T6 : 521EFP.ATEX



321 EE AS

Électrodistribeur 3/2 bistable
assistance pneumatique externe
raccordement G1/8"
3/2 double solenoid pilot
with separate air supply
G1/8"

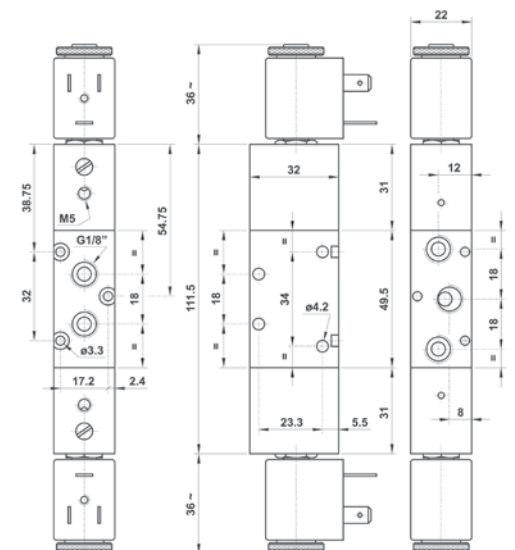
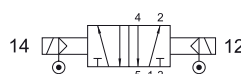
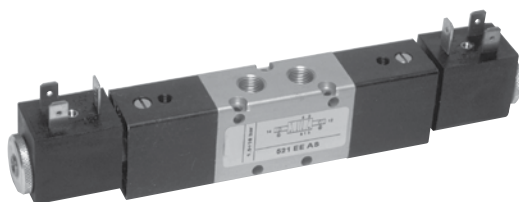
Version Atex 2GD T6 : 321EEAS.ATEX



521 EE AS

Électrodistribeur 5/2 bistable
assistance pneumatique externe
raccordement G1/8"
5/2 double solenoid pilot
with separate air supply
G1/8"

Version Atex 2GD T6 : 521EEAS.ATEX

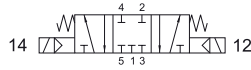


GAMME STANDARD

Électro distributeurs G1/8" | Solenoid actuated valves

5213C EE

Centre fermé
Closed center



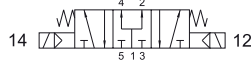
5213A EE

Centre ouvert
Open center



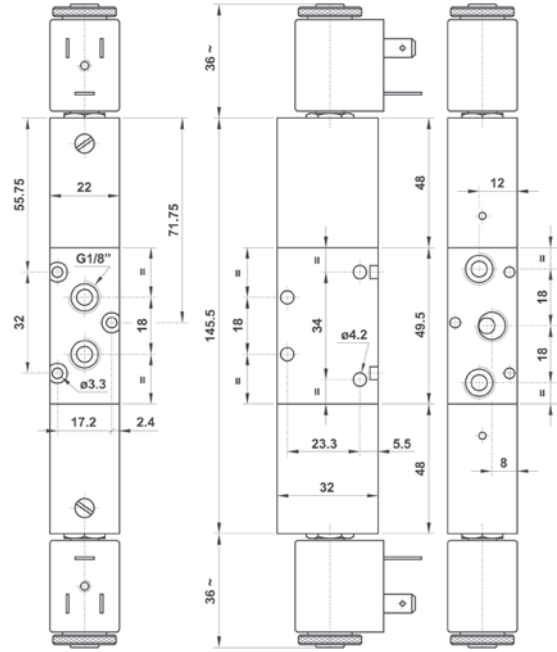
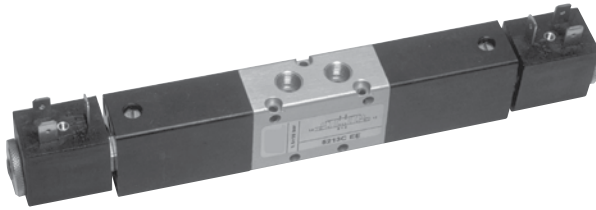
5213P EE

Centre en pression
Pressurized center



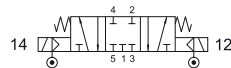
Électro distributeur 5/3
raccordement G1/8"
5/3 double solenoid pilot
G1/8"

Version Atex 2GD T6 : 5213*EE.ATEXw



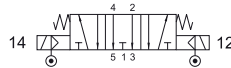
5213C EE AS

Centre fermé
Closed center



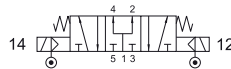
5213A EE AS

Centre ouvert
Open center



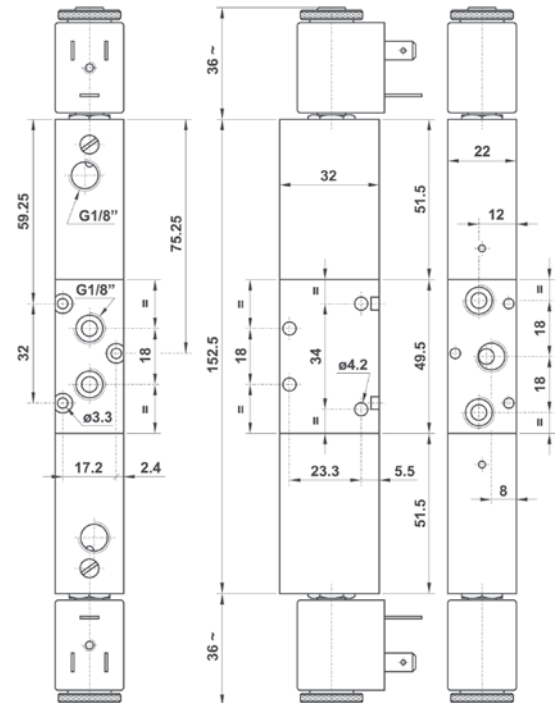
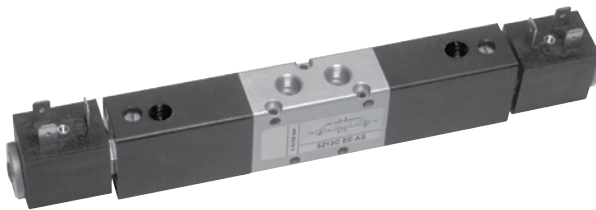
5213P EE AS

Centre en pression
Pressurized center



Électro distributeur 5/3
assistance pneumatique externe
raccordement G1/8"
5/3 double solenoid pilot
with separate air supply
G1/8"

Version Atex 2GD T6 : 5213*EEAS.ATEX



GAMME STANDARD

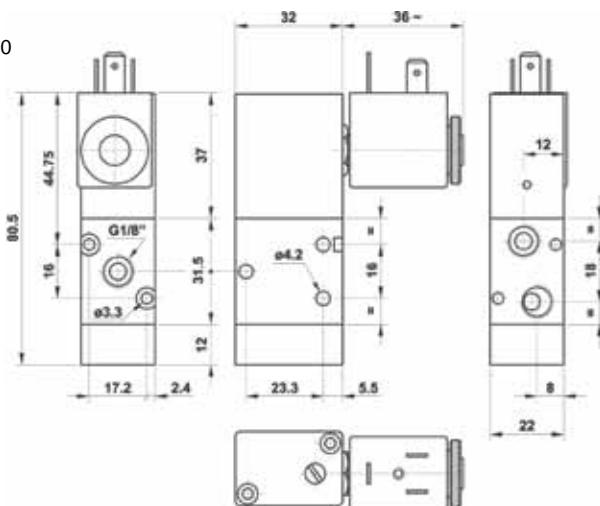
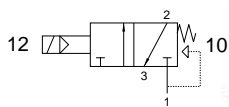
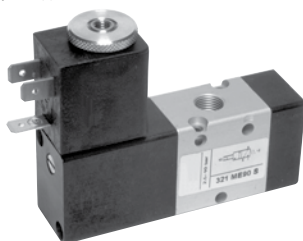
Électro distributeurs G1/8" |

Solenoid actuated valves

321 ME90 S

Électro distributeur 3/2 NF monostable
rappel à combinaison de ressort
pilote à 90° sur champ
raccordement G1/8"
*3/2 NC 90° solenoid
pilot on the narrow side
for compact assembly - spring return
G1/8"*

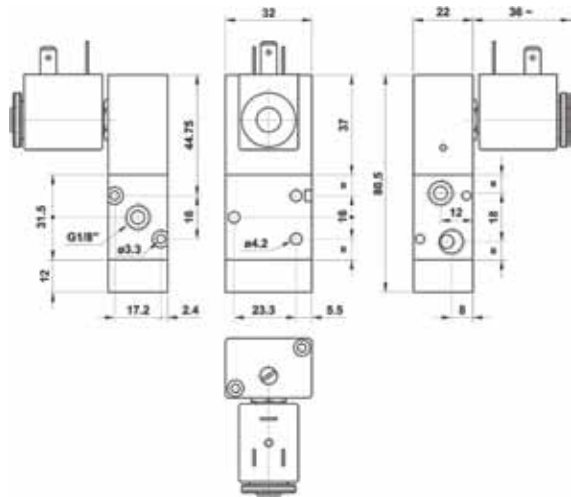
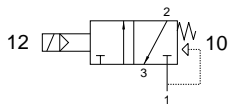
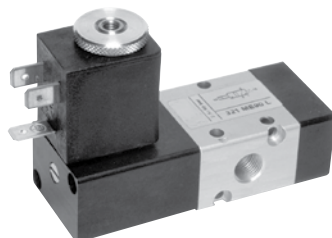
Version Atex 2GD T6 : 321ME90S.ATEX



321 ME90 L

Électro distributeur 3/2 NF monostable
rappel à combinaison de ressort
pilote à 90° sur face
raccordement G1/8"
*3/2 NC 90° solenoid pilot
on the wide side - spring return
G1/8"*

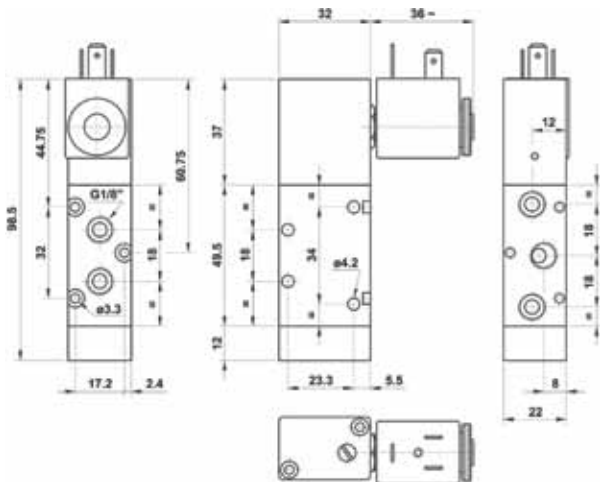
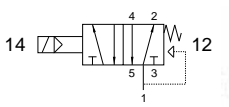
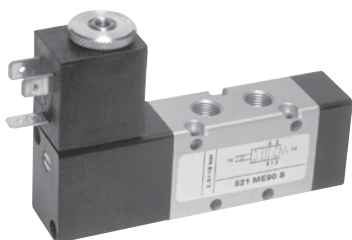
Version Atex 2GD T6 : 321ME90L.ATEX



521 ME90 S

Électro distributeur 5/2 monostable
rappel à combinaison de ressort
pilote à 90° sur champ
raccordement G1/8"
*5/2 90° solenoid pilot on the narrow
side for compact assembly - spring return
G1/8"*

Version Atex 2GD T6 : 521ME90S.ATEX



GAMME STANDARD

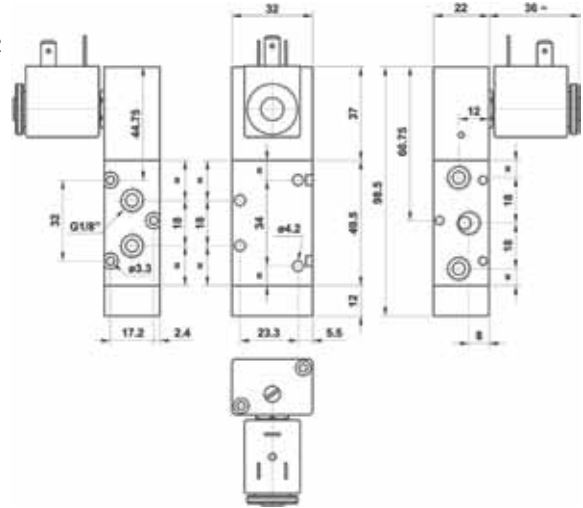
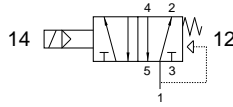
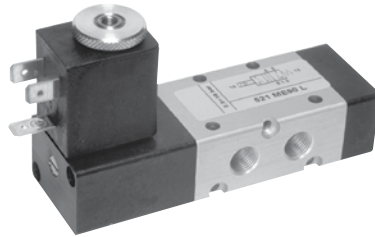
Électro distributeurs G1/8"

Solenoid actuated valves

521 ME90 L

Électro distributeur 5/2 monostable
rappel à combinaison de ressort
pilote à 90° sur face
raccordement G1/8"
5/2 90° solenoid pilot
on the wide side - spring return
G1/8"

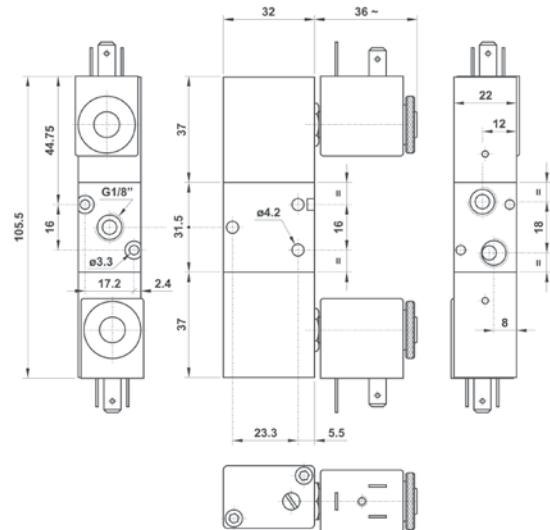
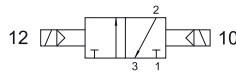
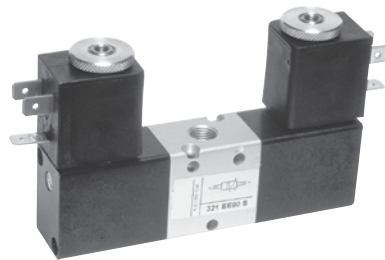
Version Atex 2GD T6 : 521ME90L.ATEX



321 EE90 S

Électro distributeur 3/2 bistable
pilotes à 90° sur champ
raccordement G1/8"
3/2 90° double solenoid pilot
on the narrow side for compact assembly
G1/8"

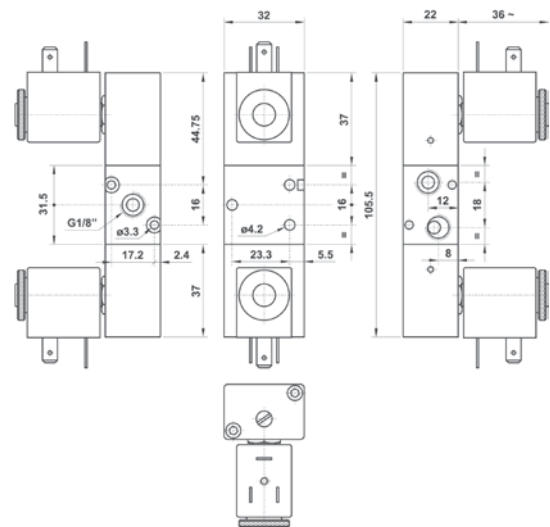
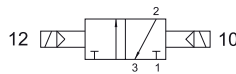
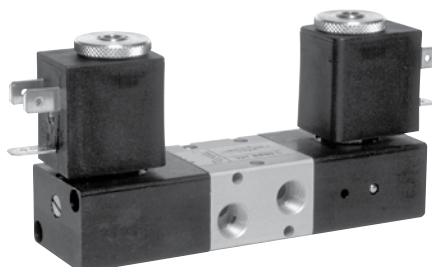
Version Atex 2GD T6 : 321EE90S.ATEX



321 EE90 L

Électro distributeur 3/2 bistable
pilotes à 90° sur face
raccordement G1/8"
3/2 90° double solenoid pilot
on the wide side
G1/8"

Version Atex 2GD T6 : 321EE90L.ATEX



GAMME STANDARD

Électro distributeurs G1/8"

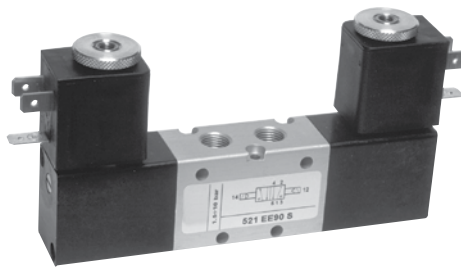
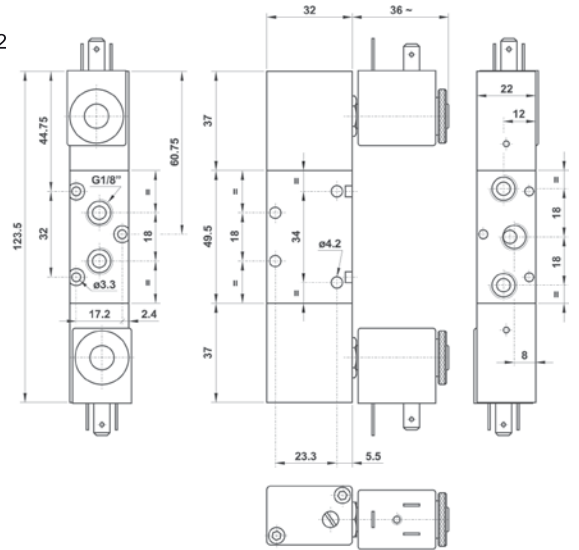
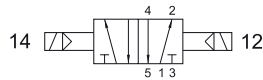
Solenoid actuated valves

521 EE90 S

Électro distributeur 5/2 bistable
pilotes à 90° sur champ
raccordement G1/8"

5/2 90° double solenoid pilot on the narrow
side for compact assembly
G1/8"

Version Atex 2GD T6 : 521EE90S.ATEX

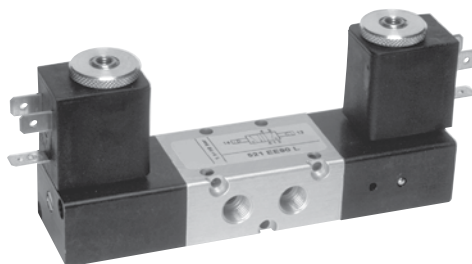
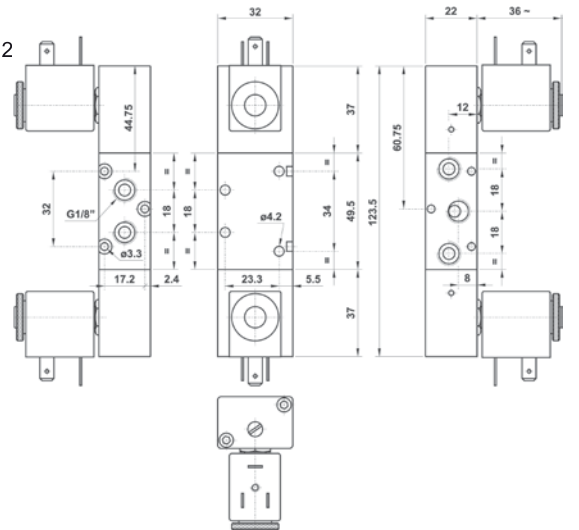


521 EE90 L

Électro distributeur 5/2 bistable
pilotes à 90° sur face
raccordement G1/8"

5/2 90° double solenoid
pilot on the wide side
G1/8"

Version Atex 2GD T6 : 521EE90L.ATEX



GAMME STANDARD

Électro distributeurs G1/8" - pilote 15 mm

Solenoid actuated valves

321 ME MIC xx

Électro distributeur 3/2 NF monostable
commande électrique 15 mm (voir chapitre 5)
 rappel à combinaison de ressort
 raccordement G1/8"

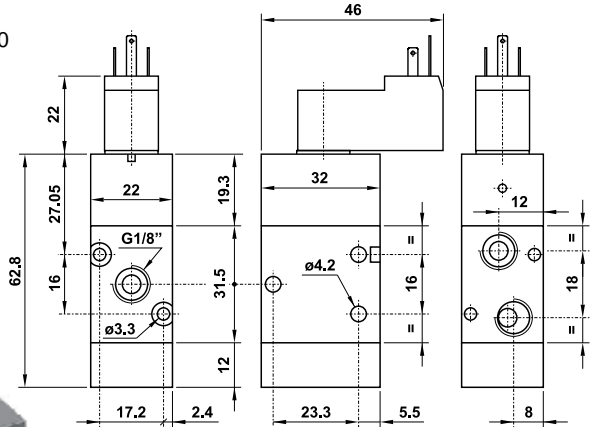
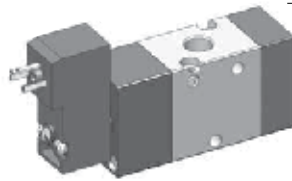
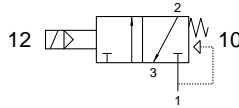
3/2 NC with 15 mm solenoid pilot (see chapter 5)
 G1/8"

Version Atex 1/2GD T4 : 321MEMICx.ATEX

Afin d'obtenir la référence de votre produit,
 remplacez la lettre "xx" par l'indication de la
 tension selon les codes ci-dessous.

*In the part number replace the letters "xx"
 with the reference of the solenoid tension*

24V DC.....01 24V 50/60Hz.....02



321 EE MIC xx

Électro distributeur 3/2 bistable
commande électrique 15 mm (voir chapitre 5)
 raccordement G1/8"

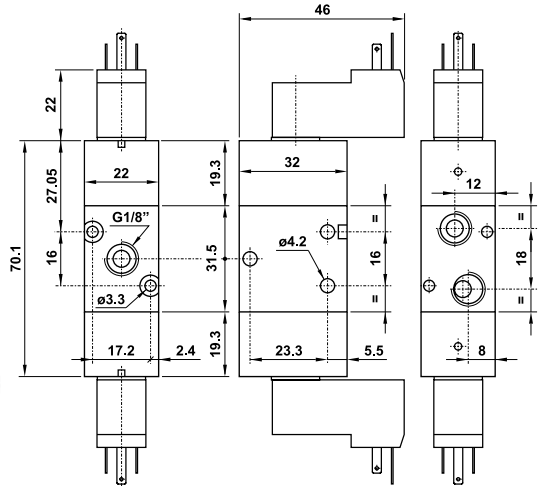
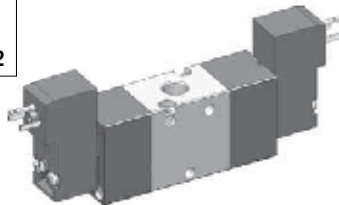
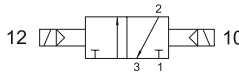
3/2 with double 15 mm solenoid pilot (see chapter 5)
 G1/8"

Version Atex 1/2GD T4 : 321EEMICx.ATEX

Afin d'obtenir la référence de votre produit,
 remplacez la lettre "xx" par l'indication de la
 tension selon les codes ci-dessous.

*In the part number replace the letters "xx"
 with the reference of the solenoid tension*

24V DC.....01 24V 50/60Hz.....02



521 ME MIC xx

Électro distributeur 5/2 monostable
commande électrique 15 mm (voir chapitre 5)
 rappel à combinaison de ressort
 raccordement G1/8"

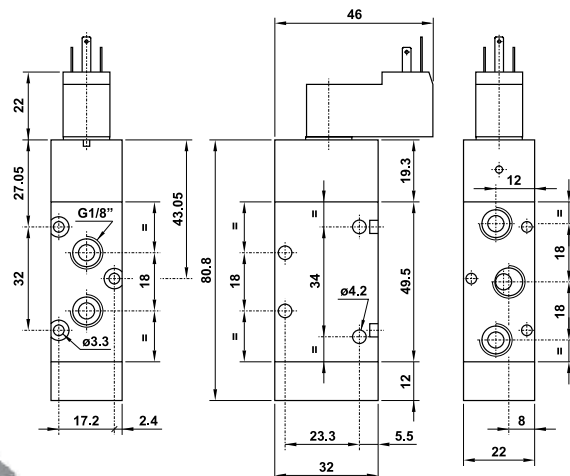
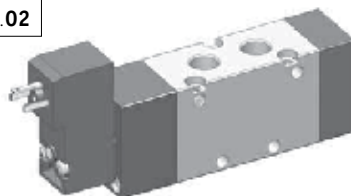
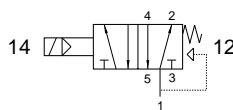
5/2 with 15 mm solenoid pilot (see chapter 5)
 G1/8"

Version Atex 1/2GD T4 : 521MEMICx.ATEX

Afin d'obtenir la référence de votre produit,
 remplacez la lettre "xx" par l'indication de la
 tension selon les codes ci-dessous.

*In the part number replace the letters "xx"
 with the reference of the solenoid tension*

24V DC.....01 24V 50/60Hz.....02



GAMME STANDARD

Électrodistribeurs G1/8" - pilote 15 mm |

Solenoid actuated valves

521 EE MIC xx

Électrodistribeur 5/2 bistable

commande électrique 15 mm (voir chapitre 5)

raccordement G1/8"

5/2 with double 15 mm solenoid pilot (see chapter 5)

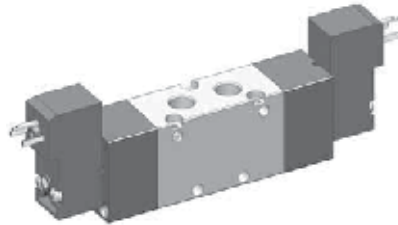
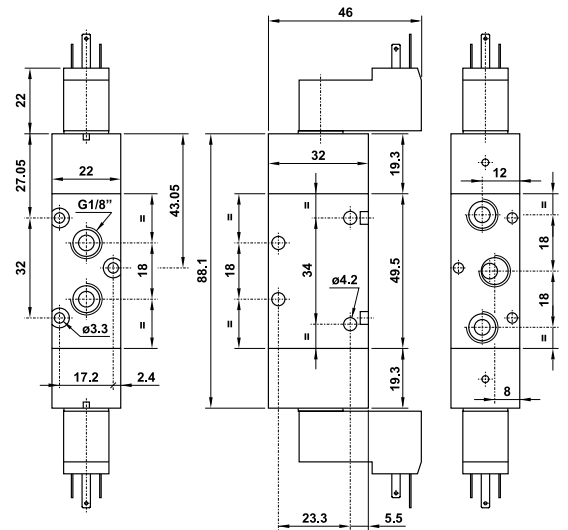
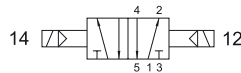
G1/8"

Version Atex 1/2GD T4 : 521EEMICx.ATEX

Afin d'obtenir la référence de votre produit, remplacez la lettre "xx" par l'indication de la tension selon les codes ci-dessous.

In the part number replace the letters "xx" with the reference of the solenoid tension

24V DC.....01 24V 50/60Hz.....02



5213C EE MIC xx

Centre fermé
Closed center

5213A EE MIC xx

Centre ouvert
Open center

5213P EE MIC xx

Centre en pression
Pressurized center

Électrodistribeur 5/3

commande électrique 15 mm (voir chapitre 5)

raccordement G1/8"

5/3 with double 15 mm solenoid pilot (see chapter 5)

chapter 5)

G1/8"

Version Atex 1/2GD T4 : 5213*EEMICx.ATEX

Afin d'obtenir la référence de votre produit, remplacez la lettre "xx" par l'indication de la tension selon les codes ci-dessous.

In the part number replace the letters "xx" with the reference of the solenoid tension

24V DC.....01 24V 50/60Hz.....02

