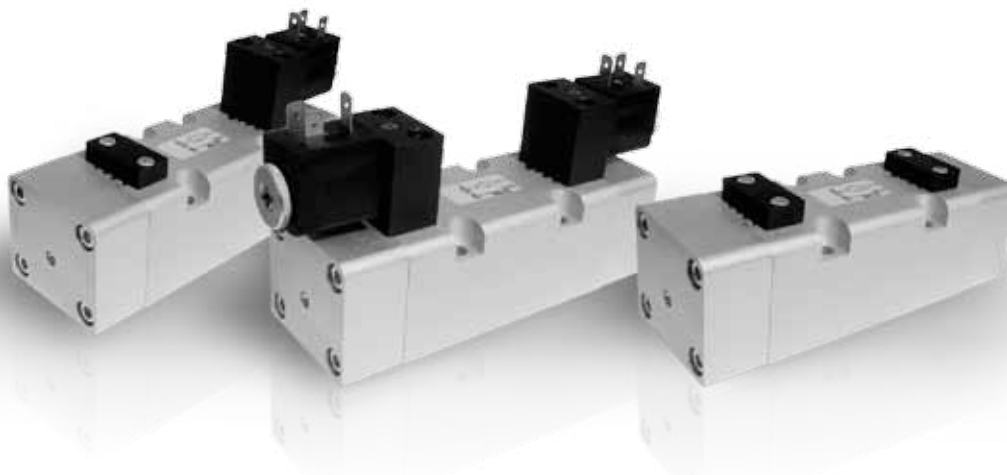


NORME ISO 5599/1

Electrodistributeur ISO 5599/1 taille 2 |

ISO 5599/2 valves & solenoid valve size 2



INFORMATIONS GÉNÉRALES GENERAL INFORMATION

- Distributeurs 5/2 - 5/3
5/2 - 5/3 spool valves
- Montage sur embase modulaire
Installation on multiple sub-bases
- Commande manuelle bistable sur l'électropilote
Detented manual override on the solenoid pilot

Matériaux

Corps : Aluminium anodisé
Ressorts : Inox
Joints : NBR
Tiroir : Aluminium nickelé
Parties internes : Laiton OT58

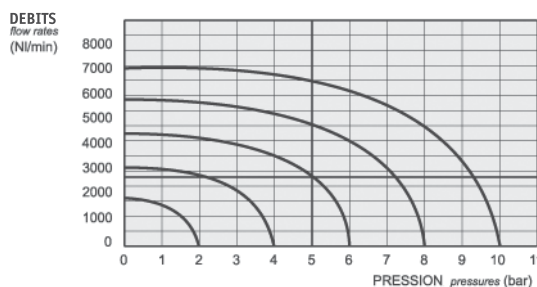
Materials

Body : Aluminium 11S
Springs : Stainless steel
Seals : NBR
Spool : Nickel plated aluminium
Internal parts : Brass OT58

Les produits de cette série sont vendus sans bobines. Ces dernières sont vendues séparément (voir chapitre 5).
The following listed products are sold without coils, which are bought separately (refer to chapter 5).

Temps de réponse - Response times

	Pneumatique <i>Pneumatic pilot</i>	Electropilote <i>Solenoid pilot</i>
Monostable <i>Monostable</i>	TRA (14) : 24 ms TRR (12) : 43 ms	TRA (14) : 39 ms TRR (12) : 60 ms
Bistable <i>Bistable</i>	TRA (14) : 30 ms TRR (12) : 30 ms	TRA (14) : 90 ms TRR (12) : 90 ms



Diamètre nominal <i>Nominal orifice</i>		9 mm	
Température de travail <i>Temperature range</i>		max +60°C	
Pression de travail <i>Working pressure</i>	al. interne monost. [<i>monost. internal air supply</i>]	al. interne bist. [<i>bistable internal air supply</i>]	al. séparée [<i>separate air supply</i>]
	2.5 ... 10 bar 0.25 ... 1 MPa	1 ... 10 bar 0.1 ... 1 MPa	max 10 bar max 1 MPa
Pression exercée (avec alim. séparée) <i>Actuating pressure (for separate air supply)</i>		monostable [<i>monostable</i>]	bistable [<i>bistable</i>]
		2.5 ... 10 bar 0.25 ... 1 MPa	1 ... 10 bar 0.1 ... 1 MPa
Fluide <i>Fluid</i>		air filtré 50µ avec ou sans lubrification <i>50µ filtered lubricated or non lubricated air</i>	

NORME ISO 5599/1

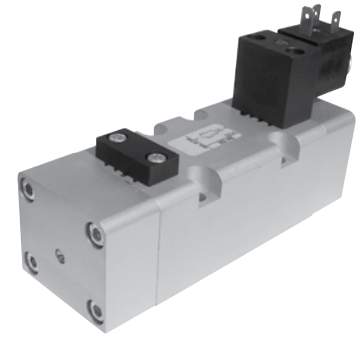
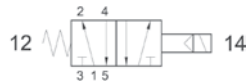
Électro distributeurs ISO 5599/1 taille 2 |

ISO 5599/2 solenoid size 2

252 ME

Électro distributeur ISO2 5/2 monostable
 rappel ressort mécanique
 5/2 solenoid pilot
 spring return

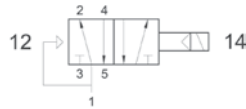
Version Atex 2GD T6 : 252ME.ATEX



252 EFP

Électro distributeur ISO2 5/2 monostable
 rappel ressort pneumatique
 5/2 solenoid pilot pneumatic
 spring return

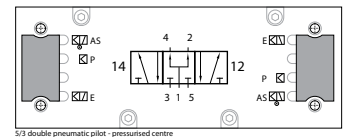
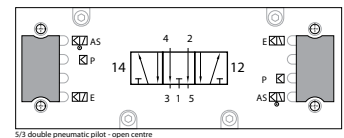
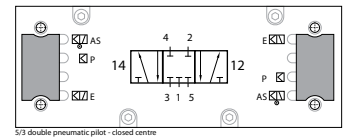
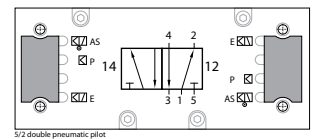
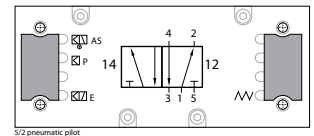
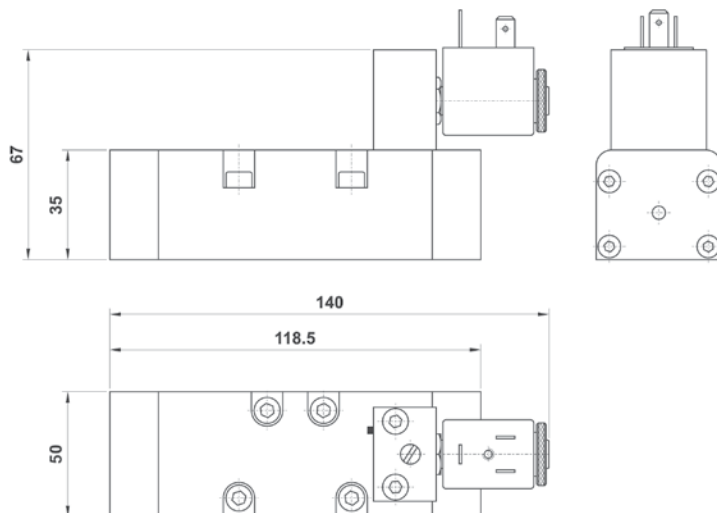
Version Atex 2GD T6 : 252EFP.ATEX



252 ME AS

Électro distributeur ISO2 5/2 monostable
 rappel ressort mécanique
 assistance pneumatique externe
 5/2 solenoid pilot with separate air supply - spring return

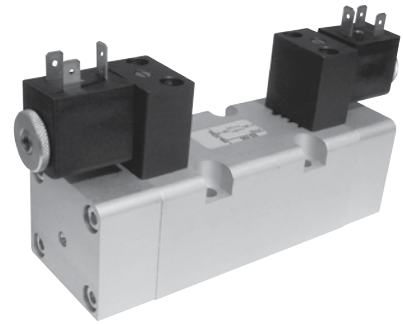
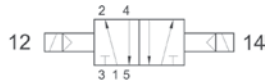
Version Atex 2GD T6 : 252MEAS.ATEX



252 EE

Électrodistributeur IS02 5/2 bistable
5/2 double solenoid pilot

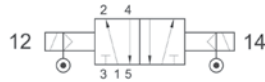
Version Atex 2GD T6 : 252EE.ATEX



252 EE AS

Électrodistributeur IS02 5/2 bistable
assistance pneumatique externe
5/2 double solenoid pilot
with separate air supply

Version Atex 2GD T6 : 252EEAS.ATEX



253C EE

Centre fermé
Closed center



253A EE

Centre ouvert
Open center



253P EE

Électrodistributeur IS02 5/3
rappel ressort mécanique
5/3 double solenoid pilot - spring return

Version Atex 2GD T6 : 253*EE.ATEX

Centre en pression
Pressurized center



253C EE AS

Centre fermé
Closed center



253A EE AS

Centre ouvert
Open center



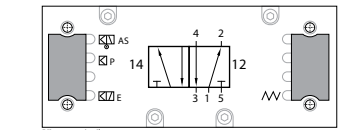
253P EE AS

Centre en pression
Pressurized center

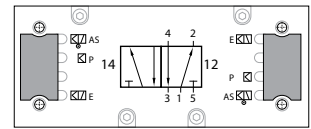


Électrodistributeur IS02 5/3
assistance pneumatique externe
rappel ressort mécanique
5/3 double solenoid pilot
with separate air supply - spring return

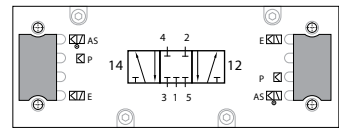
Version Atex 2GD T6 : 253*EEAS.ATEX



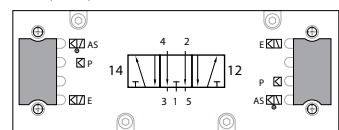
5/2 pneumatic pilot



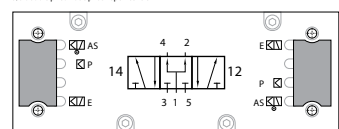
5/2 double pneumatic pilot



5/3 double pneumatic pilot - closed centre



5/3 double pneumatic pilot - open centre



5/3 double pneumatic pilot - pressurized centre

