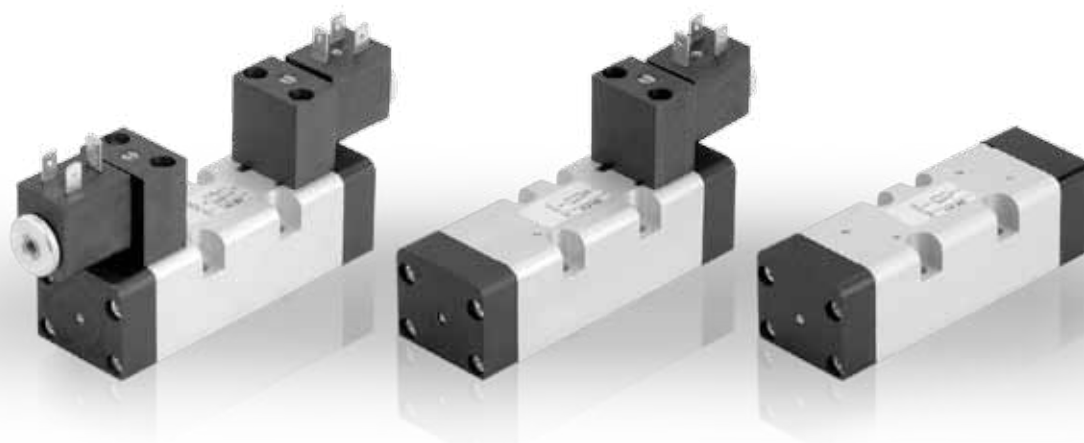


NORME ISO 5599/1

Electrodistributeur ISO 5599/1 taille 1

ISO 5599/1 valves & solenoid valves size 1



INFORMATIONS GÉNÉRALES GENERAL INFORMATION

- Distributeurs 5/2 - 5/3
5/2 - 5/3 spool valves
- Montage sur embase modulaire ou monobloc
Installation on manifolds or multiple sub-bases
- Commande manuelle bistable sur l'électropilote
Detented manual override on the solenoid pilot

Matériaux

Corps : Aluminium anodisé
Ressorts : Inox
Joints : NBR
Tiroir : Aluminium nickelé
Parties internes : Laiton OT58

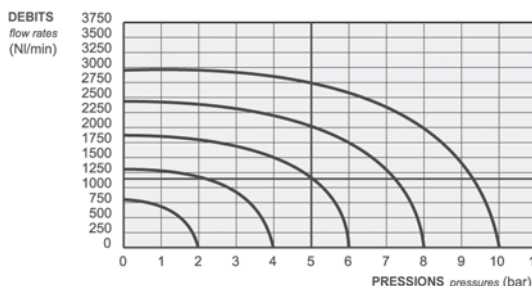
Materials

Body : Aluminium 11S
Springs : Stainless steel
Seals : NBR
Spool : Nickel plated aluminium
Internal parts : Brass OT58

Les produits de cette série sont vendus sans bobines. Ces dernières sont vendues séparément (voir chapitre 5).
The following listed products are sold without coils, which are bought separately (refer to chapter 5).

Temps de réponse - Response times

	Cde pneumatique Pneumatic pilot	Electropilote Solenoid pilot
Monostable Monostable	TRA (14) : 12 ms TRR (12) : 30 ms	TRA (14) : 24 ms TRR (12) : 50 ms
Bistable Bistable	TRA (14) : 20 ms TRR (12) : 20 ms	TRA (14) : 80 ms TRR (12) : 80 ms

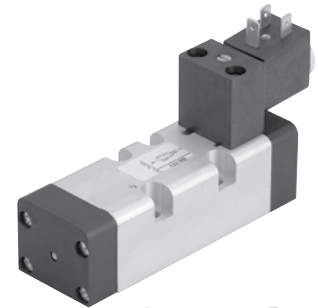
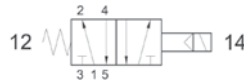


Diamètre nominal Nominal orifice		7,5 mm		
Température de travail Temperature range		max +60°C		
Pression de travail Working pressure	al. interne monost. [monost. internal air supply]	al. interne bist. [bistable internal air supply]	al. séparée [separate air supply]	
	2.5 ... 10 bar 0.25 ... 1 MPa	1 ... 10 bar 0.1 ... 1 MPa	max 10 bar max 1 MPa	
Pression exercée (avec alim. séparée) Actuating pressure (for separate air supply)	monostable [monostable]		bistable [bistable]	
	2.5 ... 10 bar 0.25 ... 1 MPa		1 ... 10 bar 0.1 ... 1 MPa	
Fluide Fluid	air filtré 50µ avec ou sans lubrification 50µ filtered lubricated or non lubricated air			

152 ME

Électrodistributeur ISO1 5/2 monostable
rappel ressort mécanique
5/2 solenoid pilot
spring return

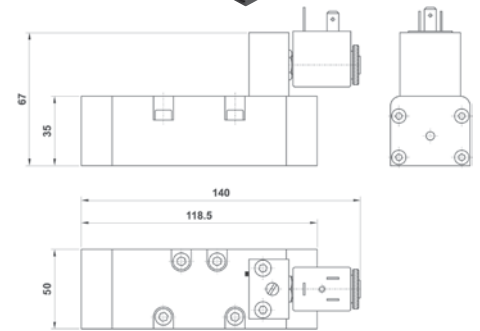
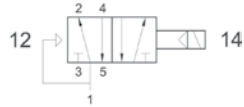
Version Atex 2GD T6 : 152ME.ATEX



152 EFP

Électrodistributeur ISO1 5/2 monostable
rappel ressort pneumatique
5/2 solenoid pilot
pneumatic spring return

Version Atex 2GD T6 : 152EFP.ATEX



152 ME AS

Électrodistributeur ISO1 5/2 monostable
assistance pneumatique externe
rappel ressort mécanique
5/2 solenoid pilot with separate air supply - spring return

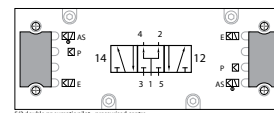
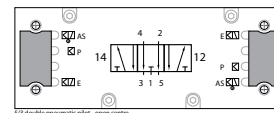
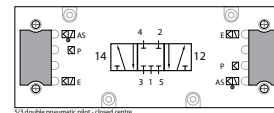
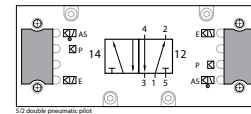
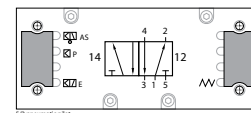
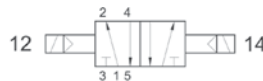
Version Atex 2GD T6 : 152MEAS.ATEX



152 EE

Électrodistributeur ISO1 5/2 bistable
5/2 double solenoid pilot

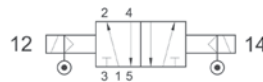
Version Atex 2GD T6 : 152EE.ATEX



152 EE AS

Électrodistributeur ISO1 5/2 bistable
assistance pneumatique externe
5/2 double solenoid pilot with separate air supply

Version Atex 2GD T6 : 152EEAS.ATEX



153C EE

Centre fermé
Closed center



153A EE

Centre ouvert
Open center



153P EE

Centre en pression
Pressurized center



Électrodistributeur ISO1 5/3
rappel ressort mécanique
5/3 double solenoid pilot - spring return

Version Atex 2GD T6 : 153*EE.ATEX

153C EE AS

Centre fermé
Closed center



153A EE AS

Centre ouvert
Open center



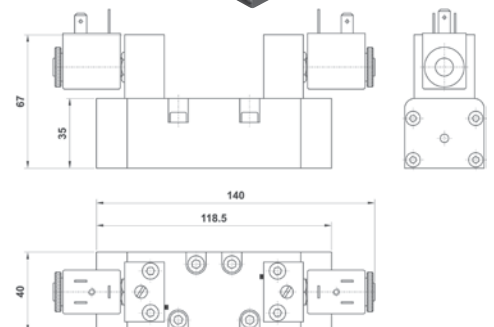
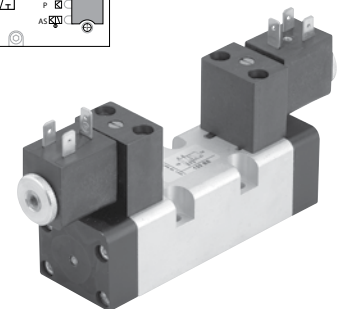
153P EE AS

Centre en pression
Pressurized center



Électrodistributeur ISO1 5/3
assistance pneumatique externe
rappel ressort mécanique
5/3 double solenoid pilot with separate air supply - spring return

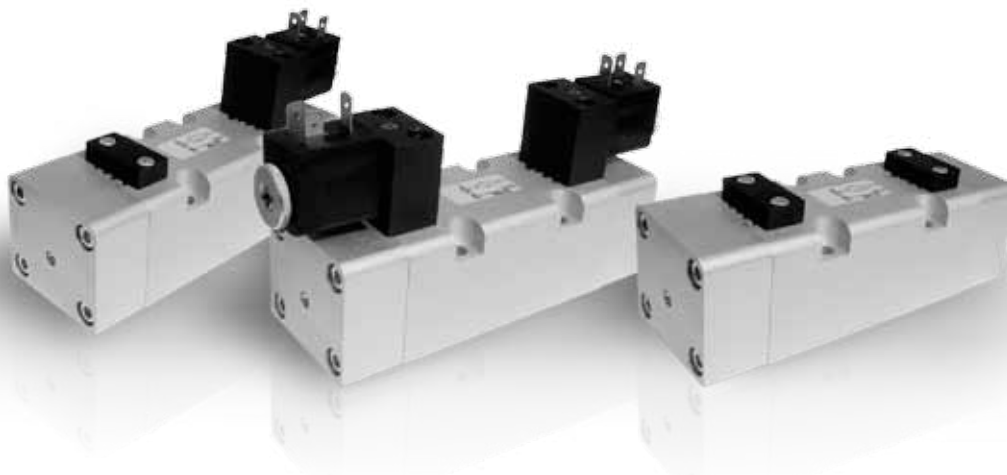
Version Atex 2GD T6 : 153*EEAS.ATEX



NORME ISO 5599/1

Electrodistributeur ISO 5599/1 taille 2 |

ISO 5599/2 valves & solenoid valve size 2



INFORMATIONS GÉNÉRALES GENERAL INFORMATION

- Distributeurs 5/2 - 5/3
5/2 - 5/3 spool valves
- Montage sur embase modulaire
Installation on multiple sub-bases
- Commande manuelle bistable sur l'électropilote
Detented manual override on the solenoid pilot

Matériaux

Corps : Aluminium anodisé
Ressorts : Inox
Joints : NBR
Tiroir : Aluminium nickelé
Parties internes : Laiton OT58

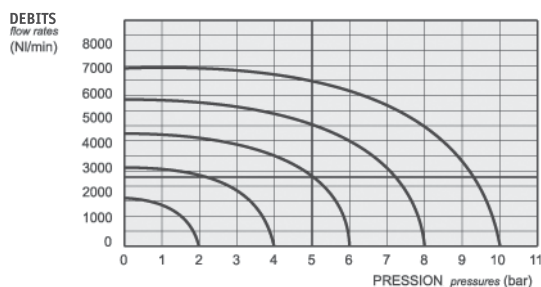
Materials

Body : Aluminium 11S
Springs : Stainless steel
Seals : NBR
Spool : Nickel plated aluminium
Internal parts : Brass OT58

Les produits de cette série sont vendus sans bobines. Ces dernières sont vendues séparément (voir chapitre 5).
The following listed products are sold without coils, which are bought separately (refer to chapter 5).

Temps de réponse - Response times

	Pneumatique <i>Pneumatic pilot</i>	Electropilote <i>Solenoid pilot</i>
Monostable <i>Monostable</i>	TRA (14) : 24 ms TRR (12) : 43 ms	TRA (14) : 39 ms TRR (12) : 60 ms
Bistable <i>Bistable</i>	TRA (14) : 30 ms TRR (12) : 30 ms	TRA (14) : 90 ms TRR (12) : 90 ms

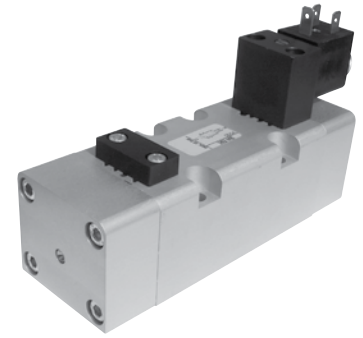
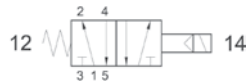


Diamètre nominal <i>Nominal orifice</i>		9 mm	
Température de travail <i>Temperature range</i>		max +60°C	
Pression de travail <i>Working pressure</i>	al. interne monost. [<i>monost. internal air supply</i>]	al. interne bist. [<i>bistable internal air supply</i>]	al. séparée [<i>separate air supply</i>]
	2.5 ... 10 bar 0.25 ... 1 MPa	1 ... 10 bar 0.1 ... 1 MPa	max 10 bar max 1 MPa
Pression exercée (avec alim. séparée) <i>Actuating pressure (for separate air supply)</i>		monostable [<i>monostable</i>]	bistable [<i>bistable</i>]
		2.5 ... 10 bar 0.25 ... 1 MPa	1 ... 10 bar 0.1 ... 1 MPa
Fluide <i>Fluid</i>		air filtré 50µ avec ou sans lubrification <i>50µ filtered lubricated or non lubricated air</i>	

252 ME

Électro distributeur ISO2 5/2 monostable
 rappel ressort mécanique
 5/2 solenoid pilot
 spring return

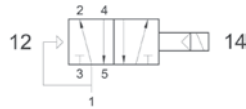
Version Atex 2GD T6 : 252ME.ATEX



252 EFP

Électro distributeur ISO2 5/2 monostable
 rappel ressort pneumatique
 5/2 solenoid pilot pneumatic
 spring return

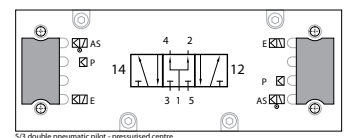
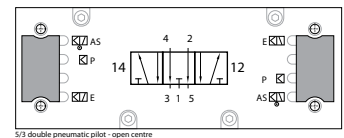
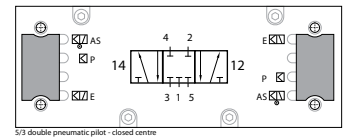
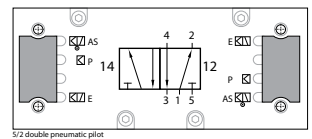
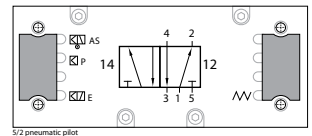
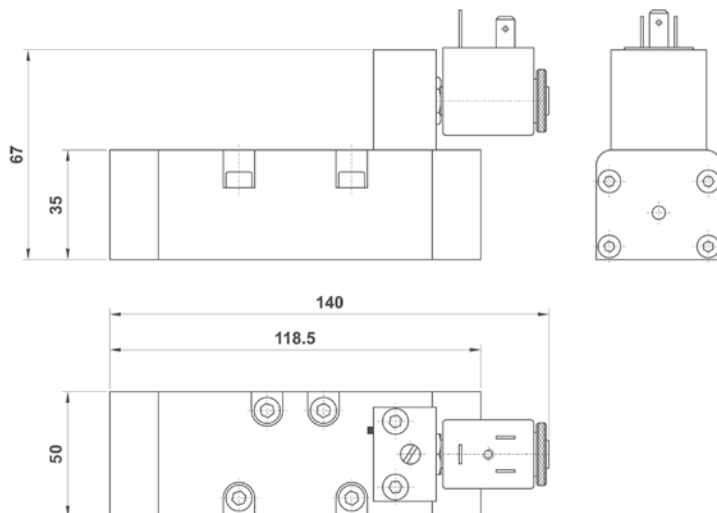
Version Atex 2GD T6 : 252EFP.ATEX



252 ME AS

Électro distributeur ISO2 5/2 monostable
 rappel ressort mécanique
 assistance pneumatique externe
 5/2 solenoid pilot with separate air supply - spring return

Version Atex 2GD T6 : 252MEAS.ATEX

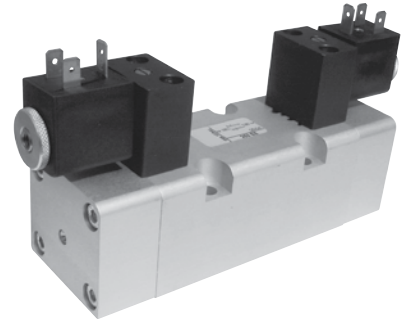
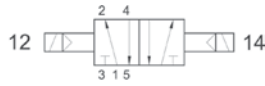


252 EE

Électrodistributeur IS02 5/2 bistable

5/2 double solenoid pilot

Version Atex 2GD T6 : 252EE.ATEX



252 EE AS

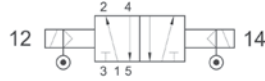
Électrodistributeur IS02 5/2 bistable

assistance pneumatique externe

5/2 double solenoid pilot

with separate air supply

Version Atex 2GD T6 : 252EEAS.ATEX



253C EE

Centre fermé
Closed center



253A EE

Centre ouvert
Open center



253P EE

Centre en pression
Pressurized center



Électrodistributeur IS02 5/3

rappel ressort mécanique

5/3 double solenoid pilot - spring return

Version Atex 2GD T6 : 253*EE.ATEX

253C EE AS

Centre fermé
Closed center



253A EE AS

Centre ouvert
Open center



253P EE AS

Centre en pression
Pressurized center



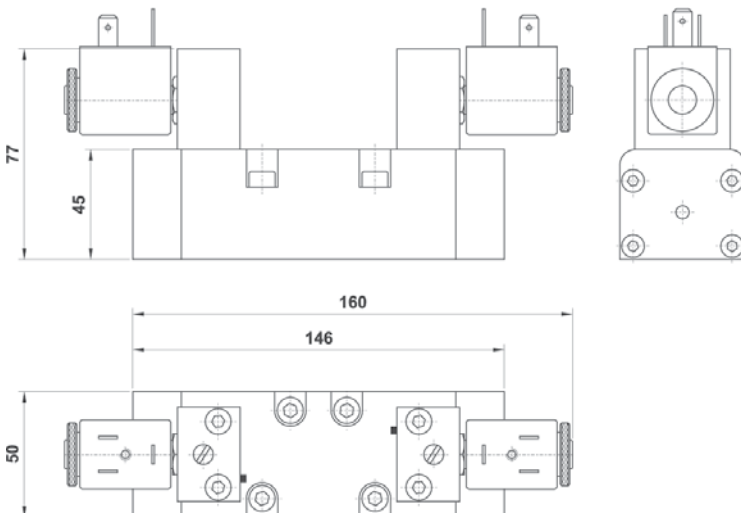
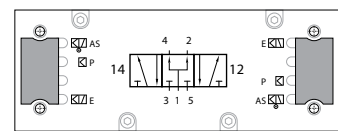
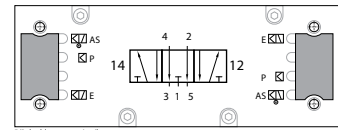
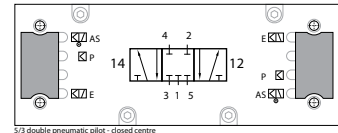
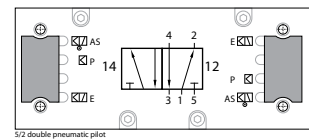
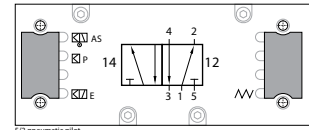
Électrodistributeur IS02 5/3

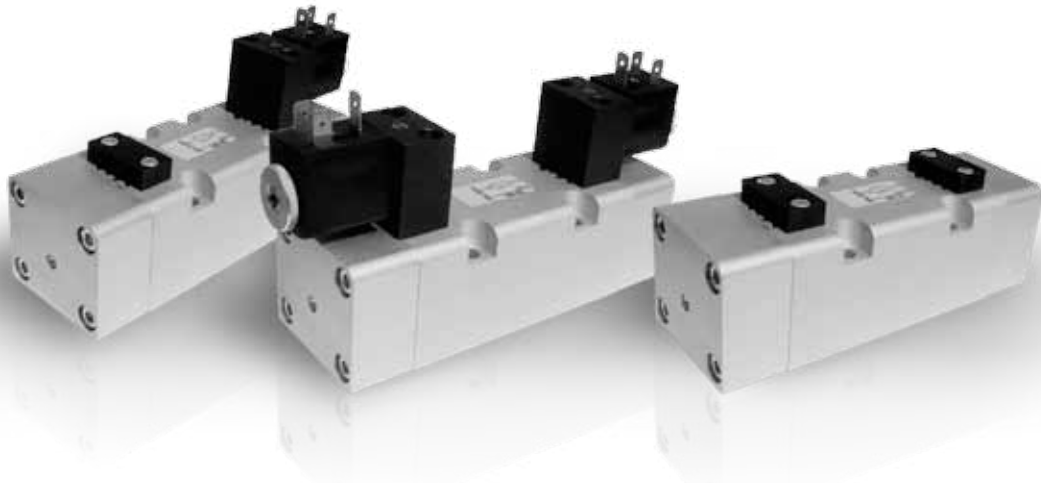
assistance pneumatique externe

rappel ressort mécanique

5/3 double solenoid pilot with separate air supply - spring return

Version Atex 2GD T6 : 253*EEAS.ATEX





INFORMATIONS GÉNÉRALES GENERAL INFORMATION

- Distributeurs 5/2 - 5/3
5/2 - 5/3 spool valves
- Montage sur embase modulaire
Installation on multiple sub-bases
- Commande manuelle bistable sur l'électropilote
Detented manual override on the solenoid pilot

Matériaux

Corps : Aluminium anodisé
Ressorts : Inox
Joints : NBR
Tiroir : Aluminium nickelé
Parties internes : Laiton OT58

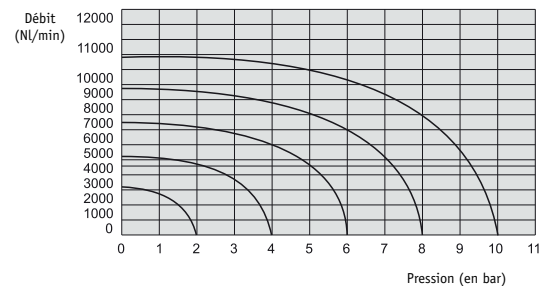
Materials

Body : Aluminium 11S
Springs : Stainless steel
Seals : NBR
Spool : Nickel plated aluminium
Internal parts : Brass OT58

Les produits de cette série sont vendus sans bobines.
Ces dernières sont vendues séparément (voir chapitre 6).
The following listed products are sold without coils, which are bought separately (refer to chapter 6).

Temps de réponse - Response times

	Cde pneumatique <i>Pneumatic pilot</i>	Electropilote <i>Solenoid pilot</i>
Monostable <i>Monostable</i>	TRA (14) : 24 ms TRR (12) : 43 ms	TRA (14) : 39 ms TRR (12) : 60 ms
Bistable <i>Bistable</i>	TRA (14) : 30 ms TRR (12) : 30 ms	TRA (14) : 90 ms TRR (12) : 90 ms

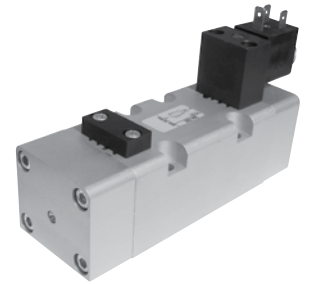
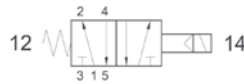


Diamètre nominal <i>Nominal orifice</i>		13 mm		
Température de travail <i>Temperature range</i>		max +60°C		
Pression de travail <i>Working pressure</i>	al. interne monost. [<i>monost. internal air supply</i>]	al. interne bist. [<i>bistable internal air supply</i>]	al. séparée [<i>separate air supply</i>]	
	2.5 ... 10 bar 0.25 ... 1 MPa	1 ... 10 bar 0.1 ... 1 MPa	max 10 bar max 1 MPa	
Pression exercée (avec alim. séparée) <i>Actuating pressure (for separate air supply)</i>	monostable [<i>monostable</i>]		bistable [<i>bistable</i>]	
	2.5 ... 10 bar 0.25 ... 1 MPa		1 ... 10 bar 0.1 ... 1 MPa	
Fluide <i>Fluid</i>	air filtré 50µ avec ou sans lubrification <i>50µ filtered lubricated or non lubricated air</i>			

352 ME

Électro distributeur ISO3 5/2 monostable
rappel ressort
5/2 solenoid pilot
spring return

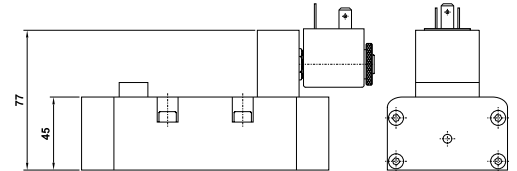
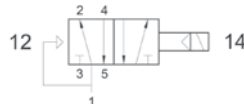
Version Atex 2GD T6 : 352ME.ATEX



352 EFP

Électro distributeur ISO3 5/2 monostable
rappel ressort pneumatique
5/2 solenoid pilot
pneumatic spring return

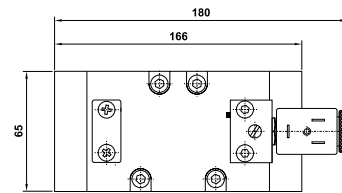
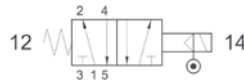
Version Atex 2GD T6 : 352EFP.ATEX



352 ME AS

Électro distributeur ISO3 5/2 monostable
rappel ressort
assistance pneumatique externe
5/2 solenoid pilot with separate air supply - spring return

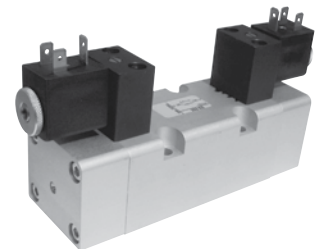
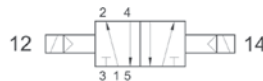
Version Atex 2GD T6 : 352MEAS.ATEX



352 EE

Électro distributeur ISO3 5/2 bistable
5/2 double solenoid pilot

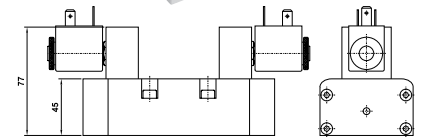
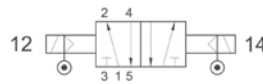
Version Atex 2GD T6 : 352EE.ATEX



352 EE AS

Électro distributeur ISO3 5/2 bistable
assistance pneumatique externe
5/2 double solenoid pilot with separate air supply

Version Atex 2GD T6 : 352EEAS.ATEX



353C EE

Centre fermé
Closed center

353A EE

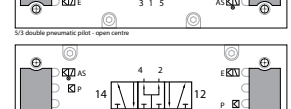
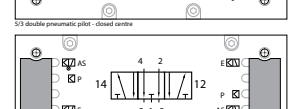
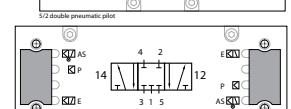
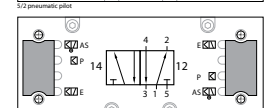
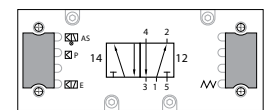
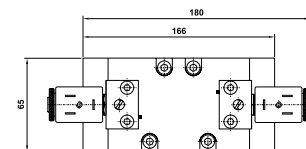
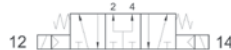
Centre ouvert
Open center

353P EE

Centre en pression
Pressurized center

Électro distributeur ISO3 5/3
5/3 double solenoid pilot

Version Atex 2GD T6 : 353*EE.ATEX



353C EE AS

Centre fermé
Closed center

353A EE AS

Centre ouvert
Open center

353P EE AS

Centre en pression
Pressurized center

Électro distributeur ISO3 5/3
assistance pneumatique externe
5/3 double solenoid pilot with separate air supply

Version Atex 2GD T6 : 353*EEAS.ATEX

