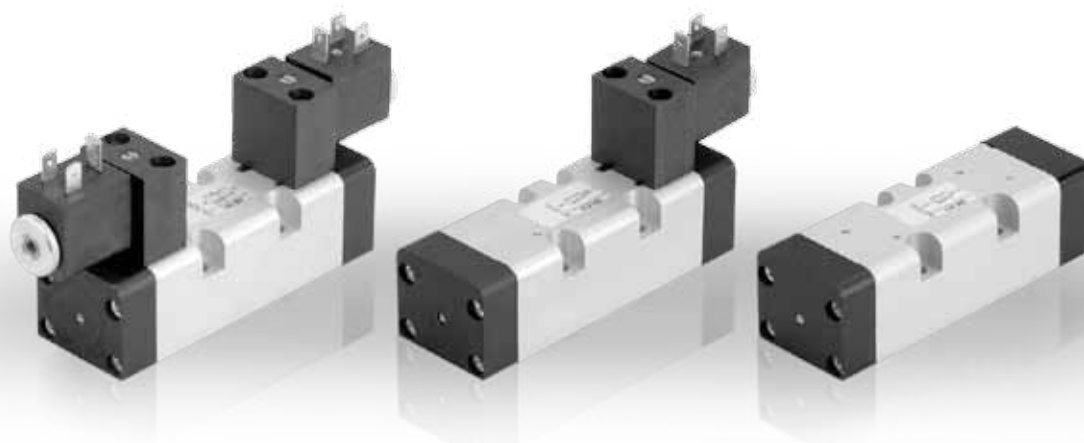


NORME ISO 5599/1

Distributeurs ISO 5599/1 taille 1 |

ISO 5599/1 valves & solenoid valves size 1



INFORMATIONS GÉNÉRALES GENERAL INFORMATION

- Distributeurs 5/2 - 5/3
5/2 - 5/3 spool valves
- Montage sur embase modulaire ou monobloc
Installation on manifolds or multiple sub-bases
- Commande manuelle bistable sur l'électropilote
Detented manual override on the solenoid pilot

Matériaux

Corps : Aluminium anodisé
Ressorts : Inox
Joints : NBR
Tiroir : Aluminium nickelé
Parties internes : Laiton OT58

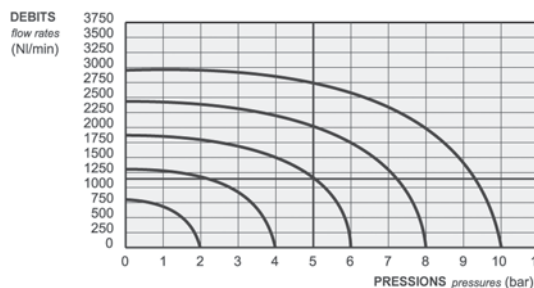
Materials

Body : Aluminium 11S
Springs : Stainless steel
Seals : NBR
Spool : Nickel plated aluminium
Internal parts : Brass OT58

Les produits de cette série sont vendus sans bobines.
Ces dernières sont vendues séparément (voir chapitre 5).
The following listed products are sold without coils, which are bought separately (refer to chapter 5).

Temps de réponse - Response times

	Cde pneumatique Pneumatic pilot	Electropilote Solenoid pilot
Monostable Monostable	TRA (14) : 12 ms TRR (12) : 30 ms	TRA (14) : 24 ms TRR (12) : 50 ms
Bistable Bistable	TRA (14) : 20 ms TRR (12) : 20 ms	TRA (14) : 80 ms TRR (12) : 80 ms



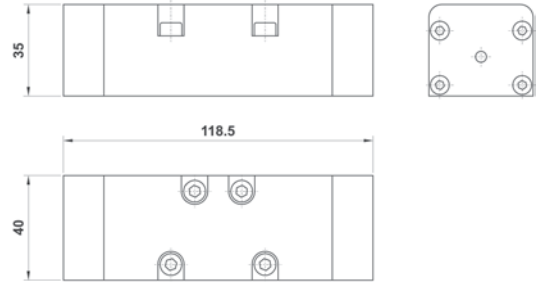
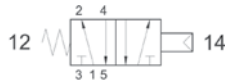
Diamètre nominal Nominal orifice		7,5 mm		
Température de travail Temperature range		max +60°C		
Pression de travail Working pressure	al. interne monost. [monost. internal air supply]	al. interne bist. [bistable internal air supply]	al. séparée [separate air supply]	
	2.5 ... 10 bar 0.25 ... 1 MPa	1 ... 10 bar 0.1 ... 1 MPa	max 10 bar max 1 MPa	
Pression exercée (avec alim. séparée) Actuating pressure (for separate air supply)	monostable [monostable]		bistable [bistable]	
	2.5 ... 10 bar 0.25 ... 1 MPa		1 ... 10 bar 0.1 ... 1 MPa	
Fluide Fluid		air filtré 50µ avec ou sans lubrification 50µ filtered lubricated or non lubricated air		

NORME ISO 5599/1

Distributeurs ISO 5599/1 taille 1 | ISO 5599/1 valves size 1

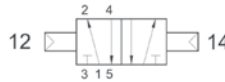
152 MC

Distributeur ISO1 5/2 monostable
commande pneumatique
rappel ressort mécanique
5/2 pneumatic pilot - spring return
Version Atex 2GD T6 : 152MC.ATEX



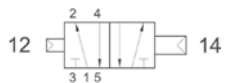
152 CC

Distributeur ISO1 5/2 bistable
commande pneumatique
5/2 double pneumatic pilot
Version Atex 2GD T6 : 152CC.ATEX



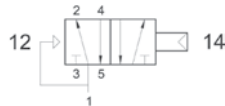
152 CCD

Distributeur ISO1 5/2 bistable différentiel
commande pneumatique
5/2 double pneumatic pilot with differential
Version Atex 2GD T6 : 152CCD.ATEX



152 CFP

Distributeur ISO1 5/2 monostable
commande pneumatique
rappel ressort pneumatique
5/2 pneumatic pilot - pneumatic spring return
Version Atex 2GD T6 : 152CFP.ATEX



153C CC

Centre fermé
Closed center



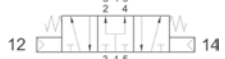
153A CC

Centre ouvert
Open center



153P CC

Centre en pression
Pressurized center

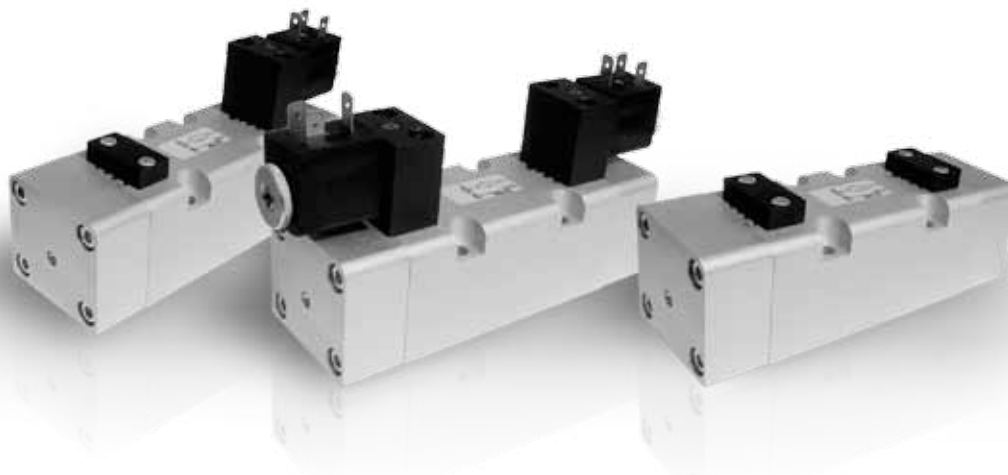


Distributeur ISO1 5/3
commande pneumatique
rappel ressort mécanique
*5/3 double pneumatic pilot
spring return*
Version Atex 2GD T6 : 153*CC.ATEX

NORME ISO 5599/1

Distributeurs ISO 5599/1 taille 2 |

ISO 5599/2 valves & solenoid valve size 2



INFORMATIONS GÉNÉRALES GENERAL INFORMATION

- Distributeurs 5/2 - 5/3
5/2 - 5/3 spool valves
- Montage sur embase modulaire
Installation on multiple sub-bases
- Commande manuelle bistable sur l'électropilote
Detented manual override on the solenoid pilot

Matériaux

Corps : Aluminium anodisé
Ressorts : Inox
Joints : NBR
Tiroir : Aluminium nickelé
Parties internes : Laiton OT58

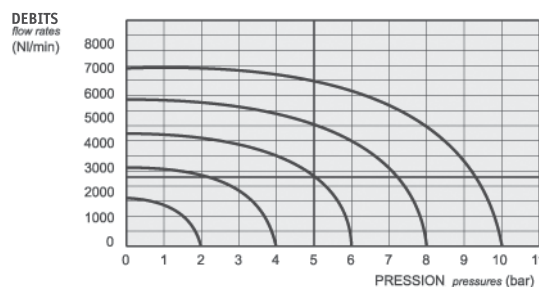
Materials

Body : Aluminium 11S
Springs : Stainless steel
Seals : NBR
Spool : Nickel plated aluminium
Internal parts : Brass OT58

Les produits de cette série sont vendus sans bobines. Ces dernières sont vendues séparément (voir chapitre 5).
The following listed products are sold without coils, which are bought separately (refer to chapter 5).

Temps de réponse - Response times

	Pneumatique <i>Pneumatic pilot</i>	Electropilote <i>Solenoid pilot</i>
Monostable <i>Monostable</i>	TRA (14) : 24 ms TRR (12) : 43 ms	TRA (14) : 39 ms TRR (12) : 60 ms
Bistable <i>Bistable</i>	TRA (14) : 30 ms TRR (12) : 30 ms	TRA (14) : 90 ms TRR (12) : 90 ms



Diamètre nominal <i>Nominal orifice</i>		9 mm	
Température de travail <i>Temperature range</i>		max +60°C	
Pression de travail <i>Working pressure</i>	al. interne monost. [<i>monost. internal air supply</i>]	al. interne bist. [<i>bistable internal air supply</i>]	al. séparée [<i>separate air supply</i>]
	2.5 ... 10 bar 0.25 ... 1 MPa	1 ... 10 bar 0.1 ... 1 MPa	max 10 bar max 1 MPa
Pression exercée (avec alim. séparée) <i>Actuating pressure (for separate air supply)</i>		monostable [<i>monostable</i>]	bistable [<i>bistable</i>]
		2.5 ... 10 bar 0.25 ... 1 MPa	1 ... 10 bar 0.1 ... 1 MPa
Fluide <i>Fluid</i>		air filtré 50µ avec ou sans lubrification <i>50µ filtered lubricated or non lubricated air</i>	

NORME ISO 5599/1

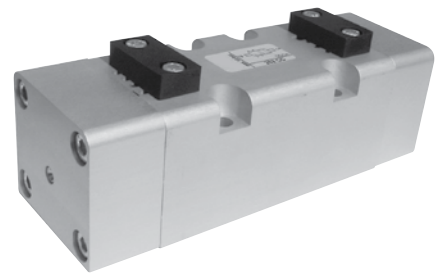
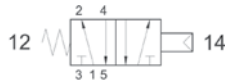
Distributeurs ISO 5599/1 taille 2 | ISO 5599/2 valves size 2

252 MC

Distributeur ISO2 5/2 monostable
commande pneumatique
rappel ressort mécanique

5/2 pneumatic pilot - spring return

Version Atex 2GD T6 : 252MC.ATEX

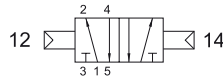


252 CC

Distributeur ISO2 5/2 bistable
commande pneumatique

5/2 double pneumatic pilot

Version Atex 2GD T6 : 252CC.ATEX

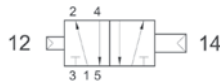


252 CCD

Distributeur ISO2 5/2 bistable différentiel
commande pneumatique

5/2 double pneumatic pilot with differential

Version Atex 2GD T6 : 252CCD.ATEX

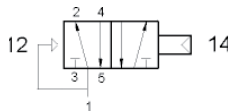


252 CFP

Distributeur ISO1 5/2 monostable
commande pneumatique
rappel ressort pneumatique

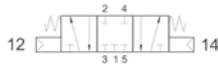
5/2 pneumatic pilot - pneumatic spring return

Version Atex 2GD T6 : 252CFP.ATEX



253C CC

Centre fermé
Closed center



253A CC

Centre ouvert
Open center



253P CC

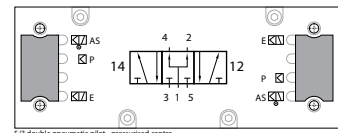
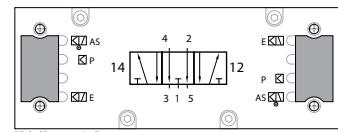
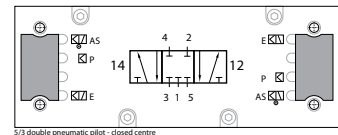
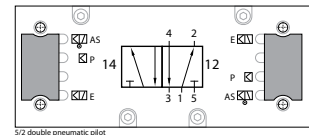
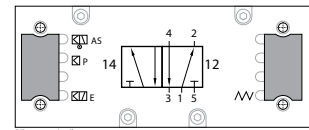
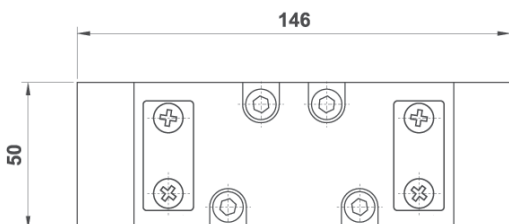
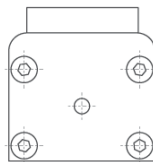
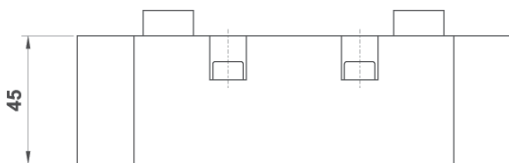
Centre en pression
Pressurized center

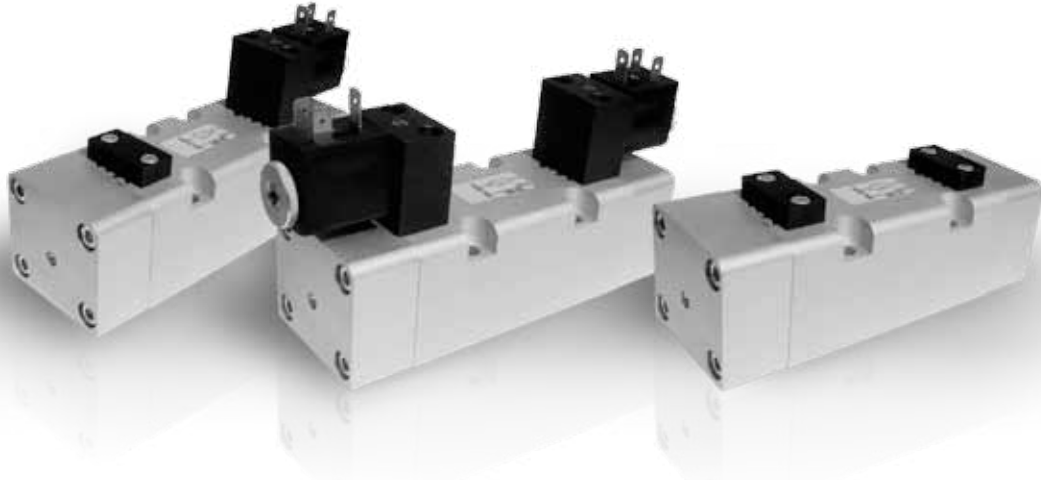


Distributeur ISO2 5/3
commande pneumatique
rappel ressort mécanique

5/3 double pneumatic pilot - spring return

Version Atex 2GD T6 : 253*CC.ATEX





INFORMATIONS GÉNÉRALES GENERAL INFORMATION

- Distributeurs 5/2 - 5/3
5/2 - 5/3 spool valves
- Montage sur embase modulaire
Installation on multiple sub-bases
- Commande manuelle bistable sur l'électropilote
Detented manual override on the solenoid pilot

Matériaux

Corps : Aluminium anodisé
Ressorts : Inox
Joints : NBR
Tiroir : Aluminium nickelé
Parties internes : Laiton OT58

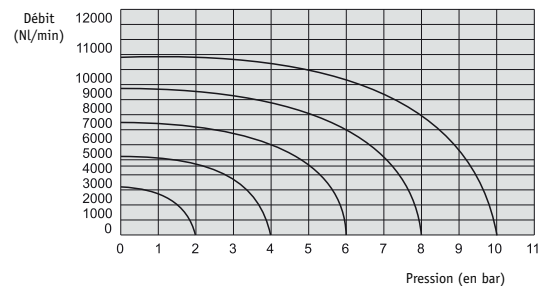
Materials

Body : Aluminium 11S
Springs : Stainless steel
Seals : NBR
Spool : Nickel plated aluminium
Internal parts : Brass OT58

Les produits de cette série sont vendus sans bobines.
Ces dernières sont vendues séparément (voir chapitre 6).
The following listed products are sold without coils, which are bought separately (refer to chapter 6).

Temps de réponse - Response times

	Cde pneumatique <i>Pneumatic pilot</i>	Electropilote <i>Solenoid pilot</i>
Monostable <i>Monostable</i>	TRA (14) : 24 ms TRR (12) : 43 ms	TRA (14) : 39 ms TRR (12) : 60 ms
Bistable <i>Bistable</i>	TRA (14) : 30 ms TRR (12) : 30 ms	TRA (14) : 90 ms TRR (12) : 90 ms



Diamètre nominal <i>Nominal orifice</i>		13 mm		
Température de travail <i>Temperature range</i>		max +60°C		
Pression de travail <i>Working pressure</i>	al. interne monost. [<i>monost. internal air supply</i>]	al. interne bist. [<i>bistable internal air supply</i>]	al. séparée [<i>separate air supply</i>]	
	2.5 ... 10 bar 0.25 ... 1 MPa	1 ... 10 bar 0.1 ... 1 MPa	max 10 bar max 1 MPa	
Pression exercée (avec alim. séparée) <i>Actuating pressure (for separate air supply)</i>	monostable [<i>monostable</i>]		bistable [<i>bistable</i>]	
	2.5 ... 10 bar 0.25 ... 1 MPa		1 ... 10 bar 0.1 ... 1 MPa	
Fluide <i>Fluid</i>		air filtré 50µ avec ou sans lubrification 50µ filtered lubricated or non lubricated air		

NORME ISO 5599/1

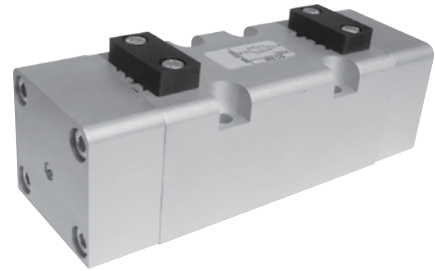
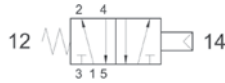
Distributeurs ISO 5599/1 taille 3 | ISO 5599/1 valves size 3

352 MC

Distributeur ISO3 5/2 monostable
commande pneumatique
rappel ressort

5/2 pneumatic pilot - spring return

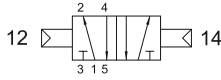
Version Atex 2GD T6 : 352MC.ATEX



352 CC

Distributeur ISO3 5/2 bistable
commande pneumatique
5/2 double pneumatic pilot

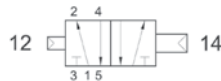
Version Atex 2GD T6 : 352CC.ATEX



352 CCD

Distributeur ISO3 5/2 bistable différentiel
commande pneumatique
5/2 double pneumatic pilot with differential

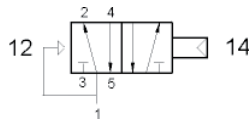
Version Atex 2GD T6 : 352CCD.ATEX



352 CFP

Distributeur ISO3 5/2 monostable
commande pneumatique
rappel ressort pneumatique
5/2 pneumatic pilot - pneumatic spring return

Version Atex 2GD T6 : 352CFP.ATEX



353C CC

353A CC

353P CC

Distributeur ISO3 5/3
commande pneumatique
5/3 double pneumatic pilot

Version Atex 2GD T6 : 353*CC.ATEX

